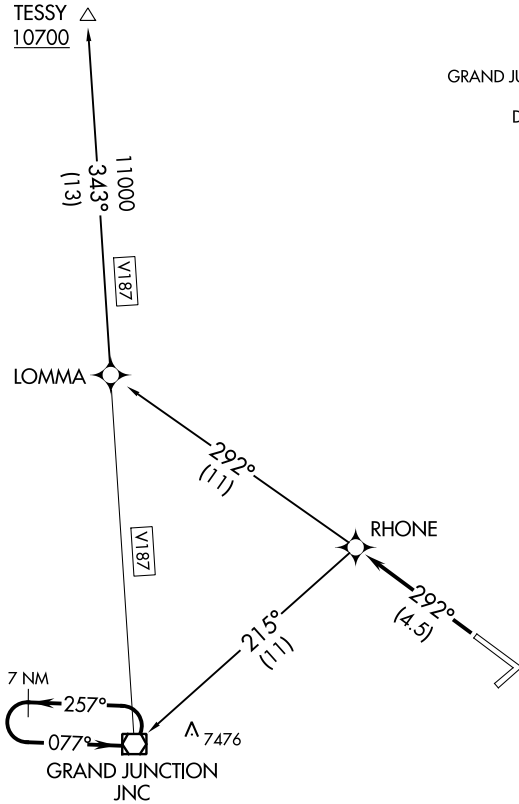


ATIS 118.55
 GND CON 121.7 257.8
 GRAND JUNCTION TOWER ★ 118.1 257.8
 DENVER DEP CON ★ 119.7 317.4
 UNICOM 122.95



NOTE: GPS required.
 NOTE: RNAV 1

TAKEOFF MINIMUMS

Rwy 4, 11, 22: NA.
 Rwy 29: GRAND JUNCTION TRANSITION: 2700-2 or standard with a minimum climb of 280' per NM from take-off to 8000'
 TESSY TRANSITION: 2700-2 or standard with a minimum climb of 220' per NM from LOMMA WP to TESSY INT or 210' per NM from take-off to 10700'.

DEPARTURE ROUTE DESCRIPTION

TAKEOFF RUNWAY 29: Climb via 292° course to RHONE WP.

GRAND JUNCTION TRANSITION (RHONE2.JNC): Aircraft departing JNC VORTAC R-221 CW R-060 depart on course. All other aircraft climb in JNC VORTAC holding pattern to cross JNC VORTAC at or above: R-061 CW R-130 9500, R-131 CW R-220 10500, before proceeding en route.

TESSY TRANSITION (RHONE2.TESSY)