


LOC/DME I-GKY <b>111.55</b> Chan 52 (Y)	APP CRS <b>342°</b>	Rwy Idg TDZE Apt Elev <b>6080</b> <b>620</b> <b>628</b>
---	------------------------	--

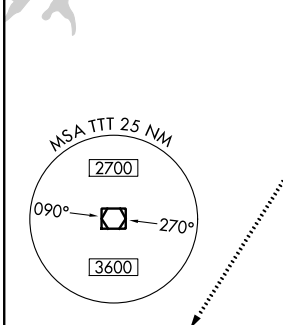
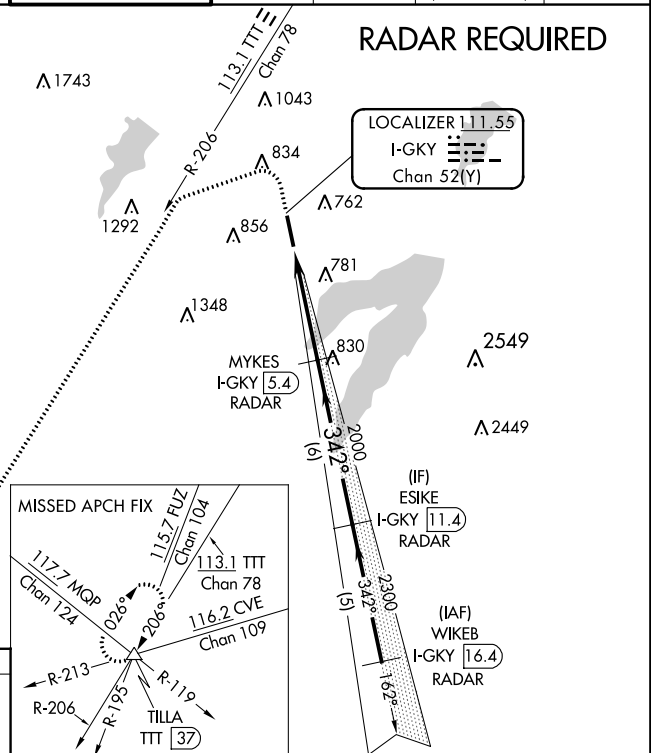
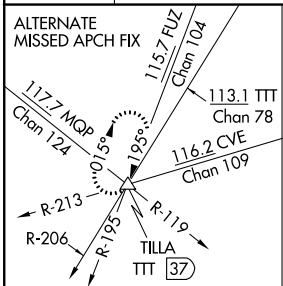
# ILS or LOC/DME RWY 34

ARLINGTON MUNI (GKY)

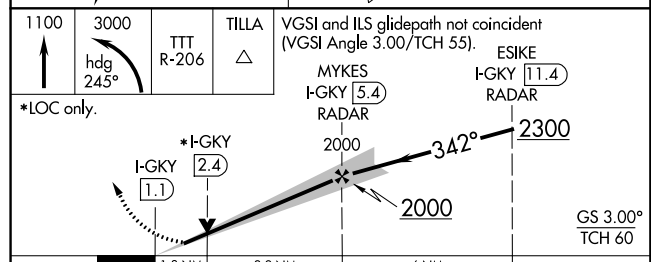
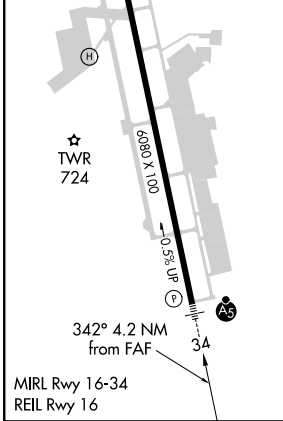
**⚠** When local altimeter setting not received, use Grand Prairie Muni altimeter setting. Inop table does not apply to S-ILS 34.  
**⚠** For inop MALSRS increase S-LOC 34 Cat A, B visibility to 1 mile.

**MALSRS**  MISSED APPROACH: Climb to 1100 then climbing left turn to 3000 via heading 245° and TTT VOR/DME R-206 to TILLA INT/TTT 37 DME and hold.

ASOS <b>127.375</b>	REGIONAL APP CON <b>135.975 379.9</b>	ARLINGTON TOWER ★ <b>128.625</b>	GND CON <b>121.875</b>	CLNC DEL <b>121.875</b>	CLNC DEL <b>118.85</b> (When twr closed)	CTAF <b>128.625</b>
------------------------	--	-------------------------------------	---------------------------	----------------------------	--	------------------------



ELEV 628	TDZE 620
----------	----------



CATEGORY	A	B	C	D
S-ILS 34		820-¾	200 (200-¾)	NA
S-LOC 34		1060-¾	440 (500-¾)	NA
CIRCLING	1100-1	472 (500-1)	1100-1½ 472 (500-1½)	NA

SC-2, 25 FEB 2021 to 25 MAR 2021

SC-2, 25 FEB 2021 to 25 MAR 2021