


WAAS CH 93827 W34A	APP CRS 342°	Rwy Idg TDZE Apt Elev	6080 620 628
--	------------------------	-----------------------------	---

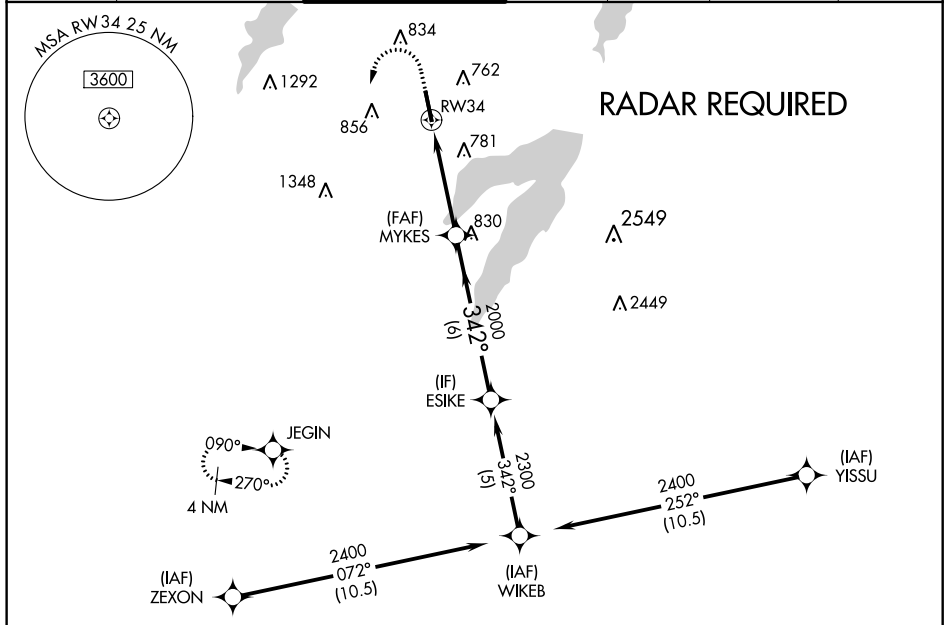
RNAV (GPS) RWY 34

ARLINGTON MUNI (GKY)

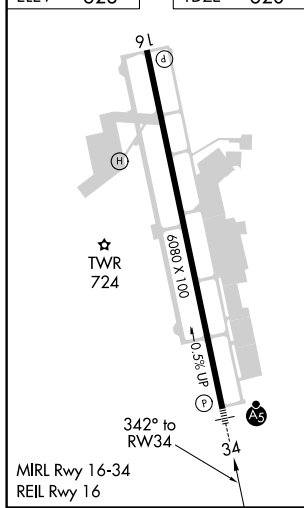
⚠ When local altimeter setting not received, use Grand Prairie Muni altimeter setting. For uncompensated Baro-VNAV systems, LNAV/VNAV NA below -16°C (4°F) or above 54°C (130°F). DME/DME RNP-0.3 NA. Inop table does not apply to LPV. For inop MALSR increase LNAV Cat A, B visibility to 1 mile.

MALSR  **MISSED APPROACH:** Climb to 1100 then climbing left turn to 2800 direct JEGIN and hold.

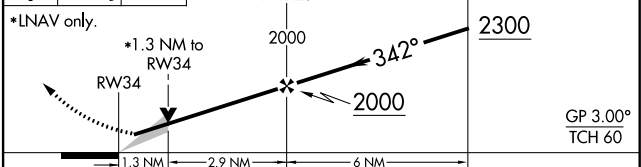
ASOS 127.375	REGIONAL APP CON 135.975 379.9	ARLINGTON TOWER * 128.625	GND CON 121.875	CLNC DEL 121.875	CLNC DEL 118.85 (When twr closed)	CTAF 128.625
------------------------	--	-------------------------------------	---------------------------	----------------------------	--	------------------------



ELEV 628	TDZE 620
----------	----------



1100 2800 JEGIN VGSI and RNAV glidepath not coincident (VGSI Angle 3.00/TCH 55).



CATEGORY	A	B	C	D
LPV DA	820-3/4	200 (200-3/4)		NA
LNAV/VNAV DA	1021-3/4	401 (400-3/4)		NA
LNAV MDA	1060-3/4	440 (500-3/4)		NA
CIRCLING	1100-1	472 (500-1)	1100-1 1/2 472 (500-1 1/2)	NA

SC-2, 25 FEB 2021 to 25 MAR 2021

SC-2, 25 FEB 2021 to 25 MAR 2021