

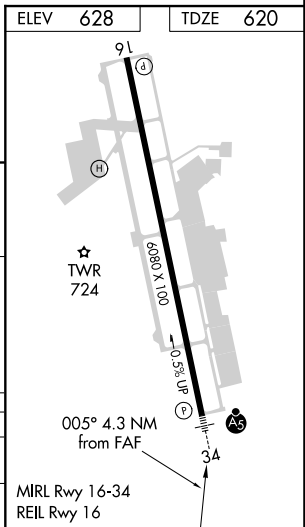
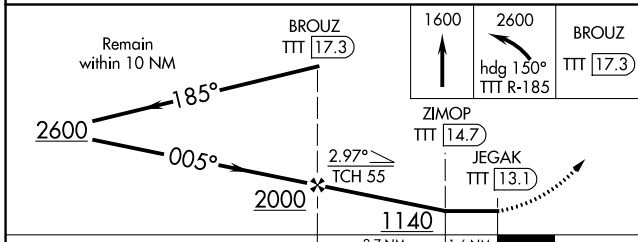
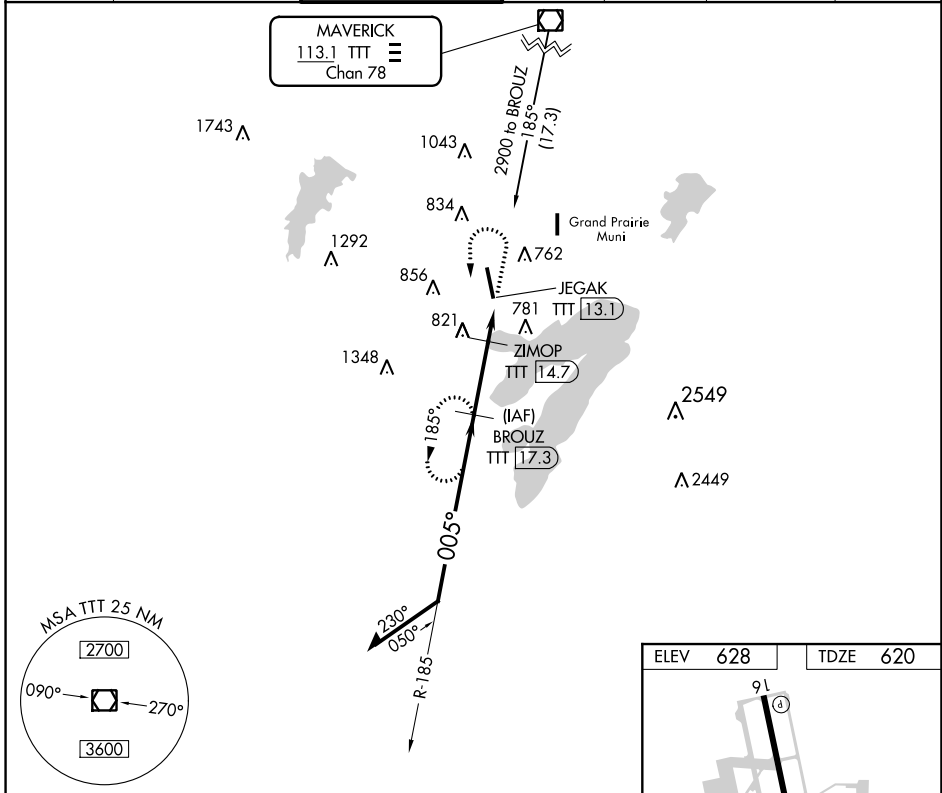
VOR/DME TTT 113.1 Chan 78	APP CRS 005°	Rwy Idg 6080 TDZE 620 Apt Elev 628
---	------------------------	---

VOR/DME RWY 34

ARLINGTON MUNI (GKY)

<p>⚠ Inoperative table does not apply. Visibility reduction by helicopters NA. When local altimeter setting not received, use Grand Prairie Muni altimeter setting.</p>	<p>MALSR</p>	<p>MISSED APPROACH: Climb to 1600 then climbing left turn to 2600 via heading 150° and TTT VOR/DME R-185 to BROUZ/17.3 DME and hold.</p>
--	---------------------	---

ASOS 127.375	REGIONAL APP CON 135.975 379.9	ARLINGTON TOWER ★ 128.625	GND CON 121.875	CLNC DEL 121.875	CLNC DEL 118.85 (When twr closed)	CTAF 128.625
------------------------	--	-------------------------------------	---------------------------	----------------------------	--	------------------------



CATEGORY	A	B	C	D
S-34	1080-1	460 (500-1)	1080-1¼ 460 (500-1¼)	NA
CIRCLING	1100-1	472 (500-1)	1100-1½ 472 (500-1½)	NA

SC-2, 25 FEB 2021 to 25 MAR 2021

SC-2, 25 FEB 2021 to 25 MAR 2021