

LOC I-GLH 109.1	APP CRS 177°	Rwy Idg TDZE Apt Elev	7981 129 131
---------------------------	------------------------	-----------------------------	---

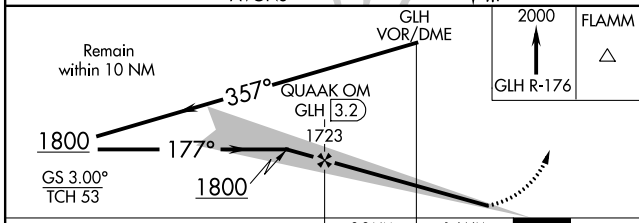
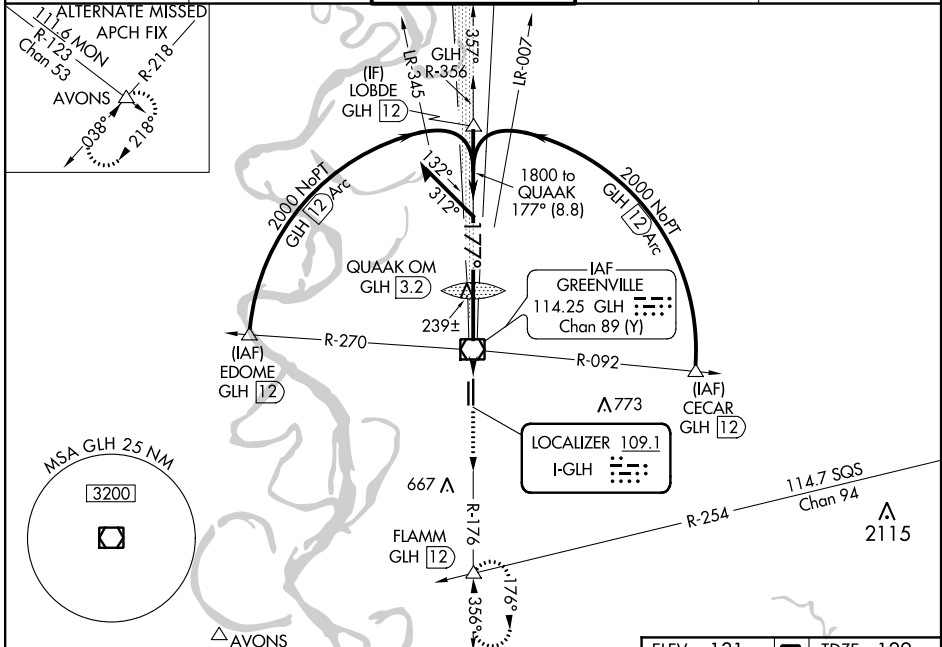
ILS or LOC RWY 18L

GREENVILLE MID-DELTA (GLH)

MALSR MISSED APPROACH: Climb to 2000 on GLH VOR/DME R-176 to FLAMM INT/12 DME and hold.

When local altimeter setting not received, use Greenwood altimeter setting. For inop MALSR when using Greenwood altimeter setting, increase S-ILS 18L and S-LOC 18L all CoTs visibility ½ mile.

ASOS 125.525	MEMPHIS CENTER 135.875 269.35	GREENVILLE TOWER ★ 119.0 (CTAF) 0 256.9	GND CON 121.8 256.9	UNICOM 122.95
------------------------	---	--	-------------------------------	-------------------------



ELEV 131	TDZE 129
177° 4.8 NM from FAF	181
REIL Rwy 36R	MIRL Rwy 18R-36L
HIRL Rwy 18L-36R	
7019 X 1.50	8001 X 1.50
298	36L 36R
FAF to MAP 4.8 NM	
Knots	60 90 120 150 180
Min:Sec	4:48 3:12 2:24 1:55 1:36

CATEGORY	A	B	C	D
S-ILS 18L	329/24		200 (200-½)	
S-LOC 18L	500/24		371 (400-½)	
CIRCLING	600-1 469 (500-1)		600-1½ 469 (500-1½)	
GREENWOOD ALTIMETER SETTING MINIMUMS				
S-ILS 18L	529/40		400 (400-¾)	
S-LOC 18L	700/40		571 (600-¾)	
CIRCLING	800-1¼ 669 (700-1¼)		800-2 669 (700-2)	

SC-4, 25 FEB 2021 to 25 MAR 2021

SC-4, 25 FEB 2021 to 25 MAR 2021