

BLTWY SIX DEPARTURE (RNAV)

ASOS
 119.275
 CLNC DEL (When twr closed)
 135.35
 GND CON
 118.625
 GALVESTON TOWER *
 120.575 (CTAF)
 HOUSTON DEP CON
 134.45 284.0

**TOP ALTITUDE:
 ASSIGNED BY ATC**

NOTE: RADAR required.
 NOTE: DME/DME/IRU or GPS required.
 NOTE: RNAV 1.

TAKEOFF MINIMUMS

Rwys 14, 18, 32, 36:
 Standard with minimum climb of 500' per NM to 520.

DEPARTURE ROUTE DESCRIPTION

TAKEOFF RWY 14: Climb on heading 138° to 520 for RADAR vectors to DREMR, thence

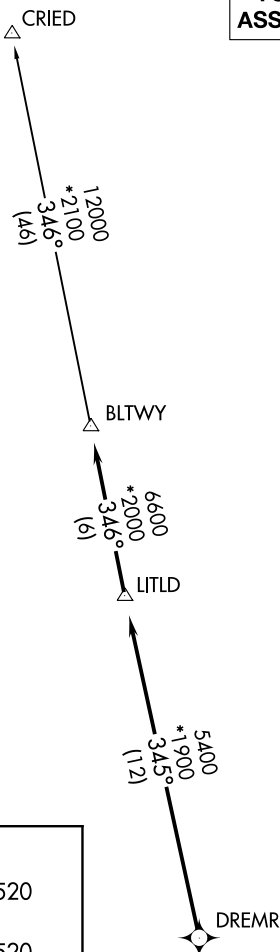
TAKEOFF RWY 18: Climb on heading 179° to 520 for RADAR vectors to DREMR, thence

TAKEOFF RWY 32: Climb on heading 318° to 520 for RADAR vectors to DREMR, thence

TAKEOFF RWY 36: Climb on heading 359° to 520 for RADAR vectors to DREMR, thence

...on track 345° to LITLD, then on track 346° to BLTWY, then on (transition). Maintain ATC assigned altitude. Expect filed altitude 10 minutes after departure.

CRIED TRANSITION (BLTWY6.CRIED)



NOTE: Chart not to scale.

BLTWY SIX DEPARTURE (RNAV)

(BLTWY6.BLTWY) 25APR19

GALVESTON, TEXAS
 SCHOLES INTL AT GALVESTON (GLS)

SC-5, 25 FEB 2021 to 25 MAR 2021

SC-5, 25 FEB 2021 to 25 MAR 2021