

(INDIE7.INDIE) 20142

AL-164 (FAA)

SCHOLES INTL AT GALVESTON (GLS)
GALVESTON, TEXAS

INDIE SEVEN DEPARTURE (RNAV)

ASOS
119.275
CLNC DEL (When twr closed)
135.35
GND CON
118.625
GALVESTON TOWER *
120.575 (CTAF)
HOUSTON DEP CON
134.45 284.0

**TOP ALTITUDE:
ASSIGNED BY ATC**

TPAKK

TAKEOFF MINIMUMS

Rwys 14, 18, 32, 36:

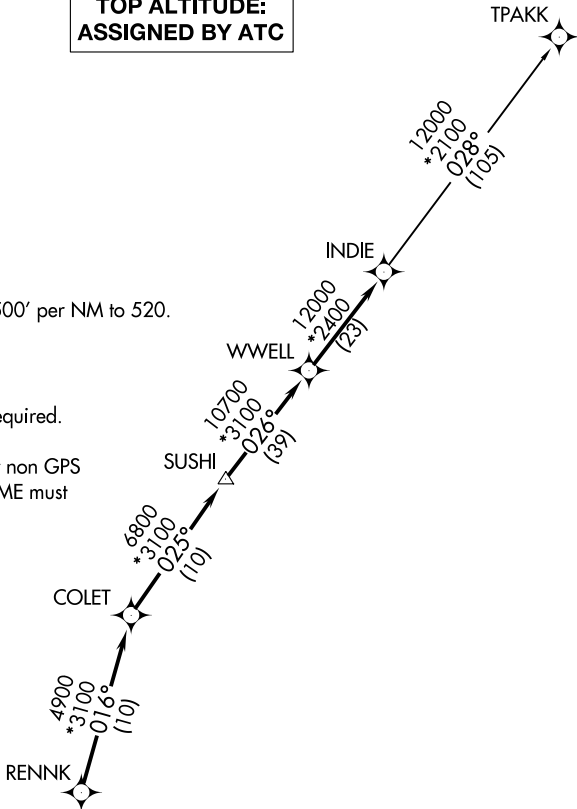
Standard with minimum climb of 500' per NM to 520.

NOTE: RADAR required.

NOTE: DME/DME/IRU or GPS required.

NOTE: RNAV 1.

NOTE: TPAKK TRANSITION: For non GPS equipped aircraft TNV DME must be operational.



DEPARTURE ROUTE DESCRIPTION

TAKEOFF RWY 14: Climb heading 138° to 520 for RADAR vectors to RENNK, thence . . .

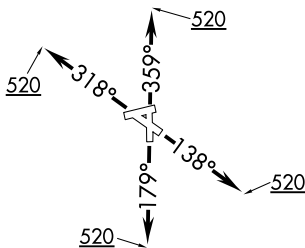
TAKEOFF RWY 18: Climb heading 179° to 520 for RADAR vectors to RENNK, thence . . .

TAKEOFF RWY 32: Climb heading 318° to 520 for RADAR vectors to RENNK, thence . . .

TAKEOFF RWY 36: Climb heading 359° to 520 for RADAR vectors to RENNK, thence . . .

. . . on track 016° to COLET, then on track 025° to SUSHI, then on track 026° to WWELL, then on track 026° to INDIE, then on (transition). Maintain ATC assigned altitude. Expect filed altitude 10 minutes after departure.

TPAKK TRANSITION (INDIE7.TPAKK)



NOTE: Chart not to scale.

SC-5, 25 FEB 2021 to 25 MAR 2021

SC-5, 25 FEB 2021 to 25 MAR 2021

INDIE SEVEN DEPARTURE (RNAV)

(INDIE7.INDIE) 25APR19

GALVESTON, TEXAS
SCHOLES INTL AT GALVESTON (GLS)