

WAAS CH 65606 W14A	APP CRS 138°	Rwy Idg 6000 TDZE 5 Apt Elev 6
--	------------------------	---

RNAV (GPS) RWY 14

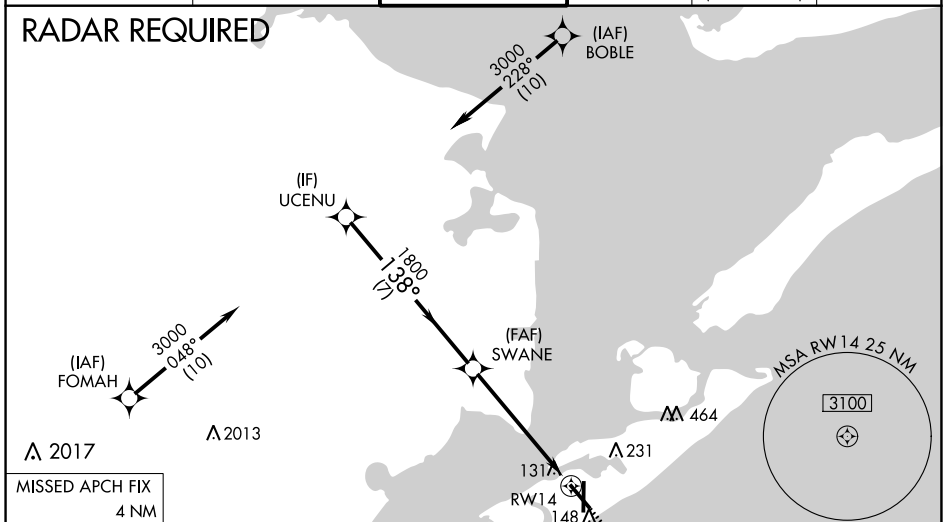
SCHOLES INTL AT GALVESTON (GLS)

⚠ Baro-VNAV and VDP NA when using William P Hobby altimeter setting. For uncompensated Baro-VNAV systems, LNAV/VNAV NA below 1°C (34°F) or above 54°C (130°F). Circling NA east of Rwy 18 and northeast of Rwy 32. DME/DME RNP-0.3 NA. When local altimeter setting not received, use William P Hobby altimeter setting and increase all DA 79 feet and all MDA 80 feet. Increase LNAV/VNAV all Cats visibility to 7/8 mile, LNAV Cats C/D/E visibility to 1 mile, and Circling Cat E visibility to 2 1/2 mile. For inop MALSR, increase LPV Cat E visibility to 3/4, LNAV/VNAV Cat E visibility to 1 1/8, and LNAV Cat E visibility to 1 3/8 mile. For inop MALSR when using William P Hobby altimeter setting, increase LPV all Cats visibility to 7/8 mile, LNAV Cat E visibility to 1 1/2 mile.

MALSR

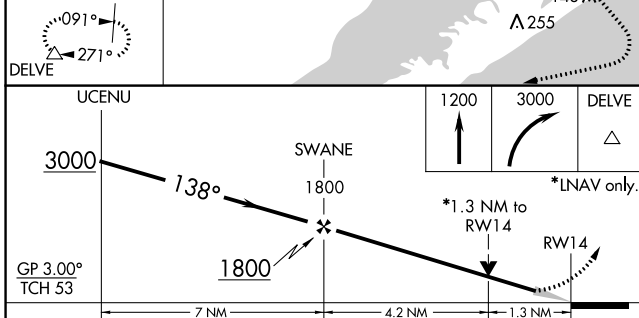
MISSED APPROACH:
Climb to 1200 then climbing right turn to 3000 direct DELVE and hold.

ASOS 119.275	HOUSTON APP CON 134.45 284.0	GALVESTON TOWER * 120.575 (CTAF) 0	GND CON 118.625	CINC DEL 135.35 (When twr closed)	UNICOM 123.05
------------------------	--	--	---------------------------	--	-------------------------

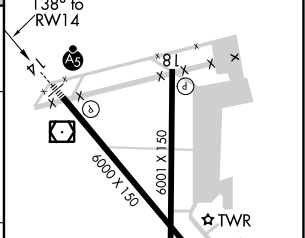


MISSED APCH FIX
4 NM

DELVE



ELEV 6	D TDZE 5
--------	-----------------



CATEGORY	A	B	C	D	E
LPV DA	205-1/2		200 (200-1/2)		
LNAV/VNAV DA	342-5/8		337 (400-5/8)		
LNAV MDA	460-1/2	455 (500-1/2)	460-7/8	455 (500-7/8)	
CIRCLING	500-1	494 (500-1)	500-1 1/2 494 (500-1 1/2)	560-2 554 (600-2)	620-2 1/4 614 (700-2 1/4)

REIL Rws 18, 32, and 36
MRL Rwy 18-36
HIRL Rwy 14-32

SC-5, 25 FEB 2021 to 25 MAR 2021

SC-5, 25 FEB 2021 to 25 MAR 2021