

WAAS CH 40101 W32A	APP CRS 318°	Rwy Idg TDZE Apt Elev	6000 5 6
--	------------------------	-----------------------------	-------------------------------------

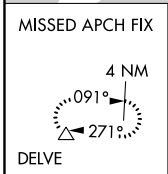
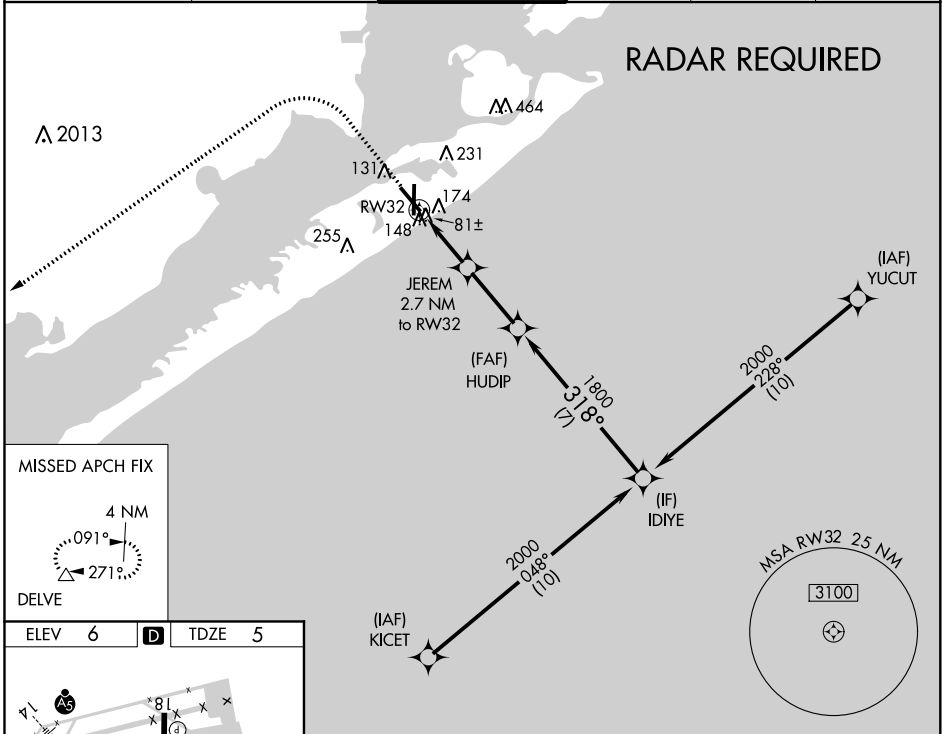
RNAV (GPS) RWY 32

SCHOLES INTL AT GALVESTON (GLS)

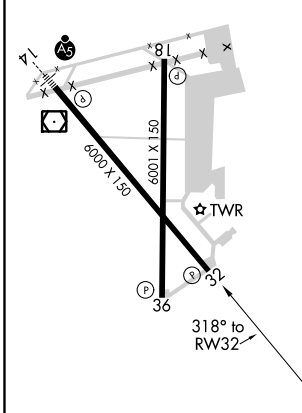
⚠ Circling NA east of Rwy 18 and northeast of Rwy 32. DME/DME RNP-0.3 NA. Helicopter visibility reduction below 3/4 SM NA. VDP NA with William P Hobby altimeter setting. When local altimeter setting not received, use William P Hobby altimeter setting and increase all MDA 80 feet. Increase LP Cat C/D/E visibility to 1 1/8, increase LNAV Cat C/D/E visibility to 1 1/8 and increase Cat E Circling visibility to 2 1/2.

⚠ MISSED APPROACH: Climb to 800 then climbing left turn to 3000 direct DELVE and hold.

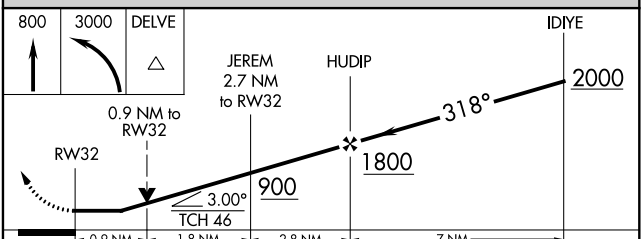
ASOS 119.275	HOUSTON APP CON 134.45 284.0	GALVESTON TOWER * 120.575 (CTAF) 0	GND CON 118.625	CLNC DEL 135.35 (When twr closed)	UNICOM 123.05
------------------------	--	---	---------------------------	--	-------------------------



ELEV 6	D	TDZE 5
--------	----------	--------



REIL Rws 18, 32 and 36
MIRL Rwy 18-36
HIRL Rwy 14-32



CATEGORY	A	B	C	D	E
LP MDA	340-1		335 (400-1)		
LNAV MDA	440-1	435 (500-1)	440-1 1/4		435 (500-1 1/4)
CIRCLING	500-1	494 (500-1)	500-1 1/2 494 (500-1 1/2)	560-2 554 (600-2)	620-2 1/4 614 (700-2 1/4)

SC-5, 25 FEB 2021 to 25 MAR 2021

SC-5, 25 FEB 2021 to 25 MAR 2021