

(WATFO5.WATFO) 20142

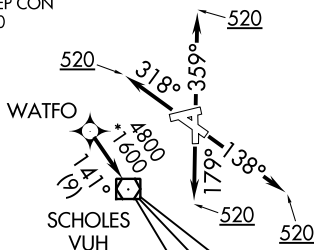
WATFO FIVE DEPARTURE (RNAV)

AL-164 (FAA)

SCHOLES INTL AT GALVESTON (GLS)
GALVESTON, TEXAS

ASOS
119.275
CLNC DEL (When twr closed)
135.35
GND CON
118.625
GALVESTON TOWER★
120.575 (CTAF)
HOUSTON DEP CON
134.45 284.0

**TOP ALTITUDE:
ASSIGNED BY ATC**



TAKEOFF MINIMUMS

Rwy 14, 18, 32, 36: Standard with minimum climb of 500' per NM to 520.

NOTE: GPS required.
NOTE: RADAR required.
NOTE: RNAV 1.

NOTE: Chart not to scale.



DEPARTURE ROUTE DESCRIPTION

TAKEOFF RWY 14: Climb on heading 138° to 520, for RADAR vectors to WATFO, thence. . . .

TAKEOFF RWY 18: Climb on heading 179° to 520, for RADAR vectors to WATFO, thence. . . .

TAKEOFF RWY 32: Climb on heading 318° to 520, for RADAR vectors to WATFO, thence. . . .

TAKEOFF RWY 36: Climb on heading 359° to 520, for RADAR vectors to WATFO, thence. . . .

. . . on track 141° to VUH VOR/DME, then on (transition). Maintain ATC assigned altitude. Expect filed altitude 10 minutes after departure.

ANKRR TRANSITION (WATFO5.ANKRR)
KELPP TRANSITION (WATFO5.KELPP)
MUSYL TRANSITION (WATFO5.MUSYL)

WATFO FIVE DEPARTURE (RNAV)

(WATFO5.WATFO) 25APR19

GALVESTON, TEXAS
SCHOLES INTL AT GALVESTON (GLS)

SC-5, 25 FEB 2021 to 25 MAR 2021

SC-5, 25 FEB 2021 to 25 MAR 2021