

WYLSN SEVEN DEPARTURE (RNAV)

ASOS
 119.275
 CLNC DEL (When twr closed)
 135.35
 GND CON
 118.625
 GALVESTON TOWER ★
 120.575 (CTAF)
 HOUSTON DEP CON
 134.45 284.0

**TOP ALTITUDE:
 ASSIGNED BY ATC**

NOTE: RADAR required.
 NOTE: DME/DME/IRU or GPS required.
 NOTE: RNAV 1.

TAKEOFF MINIMUMS

Rwys 14, 18, 32, 36: Standard with minimum climb of 500' per NM to 520.

DEPARTURE ROUTE DESCRIPTION

TAKEOFF RWY 14: Climb on heading 138° to 520 for RADAR vectors to WYLSN, thence. . . .

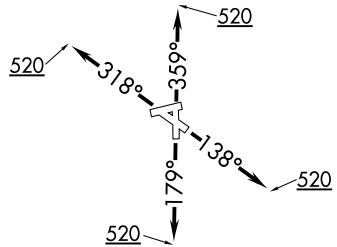
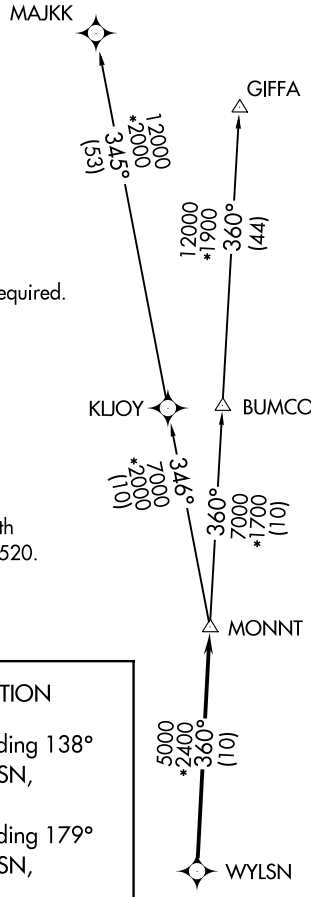
TAKEOFF RWY 18: Climb on heading 179° to 520 for RADAR vectors to WYLSN, thence. . . .

TAKEOFF RWY 32: Climb on heading 318° to 520 for RADAR vectors to WYLSN, thence. . . .

TAKEOFF RWY 36: Climb on heading 359° to 520 for RADAR vectors to WYLSN, thence. . . .

. . . .on track 360° to MONNT, then on (transition). Maintain ATC assigned altitude. Expect filed altitude 10 minutes after departure.

GIFFA TRANSITION (WYLSN7.GIFFA)
MAJJK TRANSITION (WYLSN7.MAJJK)



NOTE: Chart not to scale.

WYLSN SEVEN DEPARTURE (RNAV)

SC-5, 25 FEB 2021 to 25 MAR 2021

SC-5, 25 FEB 2021 to 25 MAR 2021