

APP CRS **255°**
 Rwy Idg **5000**
 TDZE **715**
 Apt Elev **716**

RNAV (GPS) RWY 26

GLASGOW MUNI (GLW)

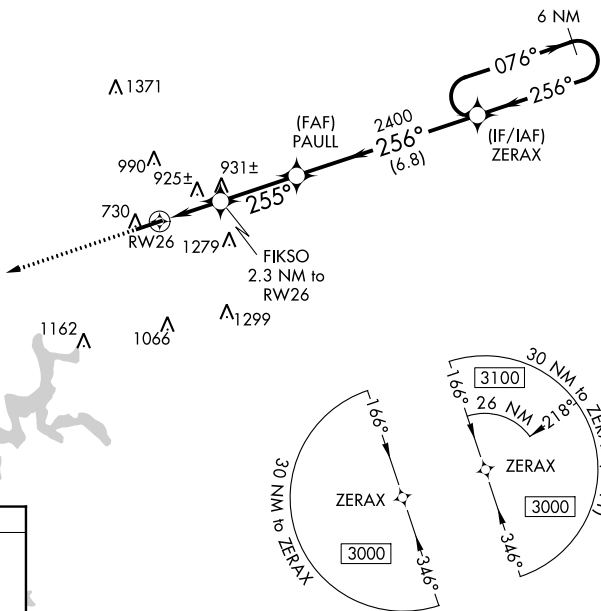
▽ DME/DME RNP-0.3 NA. Helicopter visibility reduction below 1 SM NA. When local altimeter setting not received, use Bowling Green altimeter setting and increase all MDA 160 feet, LNAV Cat C and D visibility ½ mile, Circling Cat C ½ mile, Cat D ¼ mile. Night landing: Rwy 26 NA.

MISSED APPROACH:
 Climb to 3000 direct
 GIRME and hold.

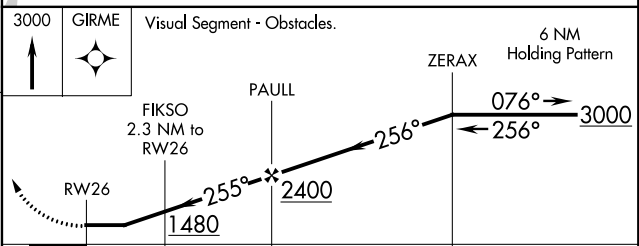
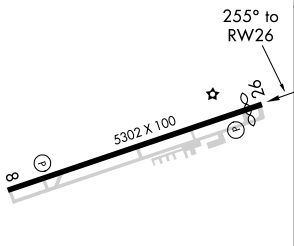
AWOS-3
118.525

MEMPHIS CENTER
132.9 290.3

UNICOM
122.8 (CTAF) 0



ELEV 716 **D** TDZE 715



CATEGORY	A	B	C	D
LNAV MDA	1200-1	485 (500-1)	1200-1 $\frac{3}{8}$	485 (500-1 $\frac{3}{8}$)
CIRCLING	1220-1 504 (600-1)	1240-1 524 (600-1)	1260-1 $\frac{1}{2}$ 544 (600-1 $\frac{1}{2}$)	1540-2 $\frac{3}{4}$ 824 (900-2 $\frac{3}{4}$)

MIRL Rwy 8-26 **0**
 REIL Rws 8 and 26 **0**

SE-1, 25 FEB 2021 to 25 MAR 2021

SE-1, 25 FEB 2021 to 25 MAR 2021