

WAAS CH <b>87032</b> <b>W04A</b>	APP CRS <b>044°</b>	Rwy Idg TDZE Apt Elev	<b>4001</b> <b>821</b> <b>823</b>
--	------------------------	-----------------------------	---

# RNAV (GPS) RWY 4

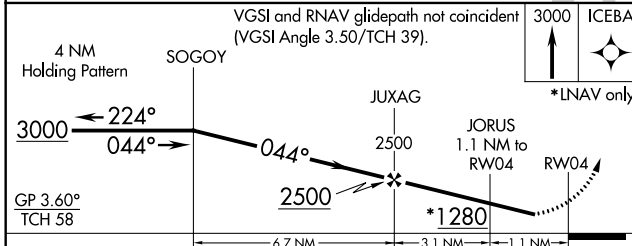
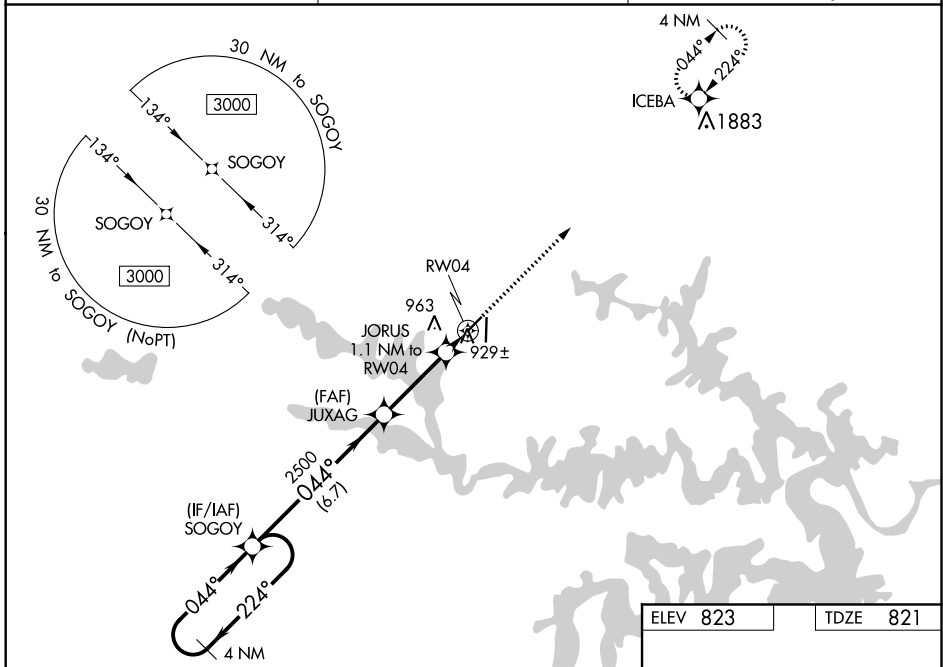
CLINTON RGNL (GLY)

RNP APCH.

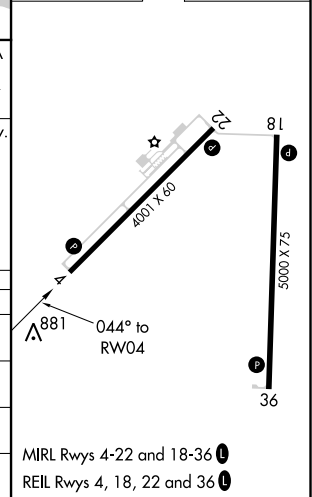
**▼** For uncompensated Baro-VNAV systems, LNAV/VNAV NA below -16°C or above 54°C.  
**▲** When local altimeter setting not received, use Whiteman AFB altimeter setting and increase all DA 61 feet and all MDA 80 feet; increase LNAV-VNAV all Cats and LNAV Cat C visibility ¼ mile. Baro-VNAV NA when using Whiteman AFB altimeter setting. Straight-in Rwy 4 NA at night, Circling Rwy 4 NA at night. Rwy 4 helicopter visibility reduction below 1 SM NA.

MISSED APPROACH:  
Climb to 3000 direct ICEBA and hold.

AWOS-3 <b>120.475</b>	WHITEMAN APP CON * <b>127.45</b>	UNICOM <b>122.8 (CTAF) 0</b>
--------------------------	-------------------------------------	---------------------------------



ELEV 823	TDZE 821
----------	----------



CATEGORY	A	B	C	D
LPV DA	1121-1	300 (300-1)		NA
LNAV/VNAV DA	1206-1½	385 (400-1½)		NA
LNAV MDA	1180-1	359 (400-1)		NA
<b>C</b> CIRCLING	1280-1 457 (500-1)	1300-1 477 (500-1)	1340-1½ 517 (600-1½)	NA

NC-3, 25 FEB 2021 to 25 MAR 2021

NC-3, 25 FEB 2021 to 25 MAR 2021