

GROVE, OKLAHOMA

AL-6721 (FAA)

20226

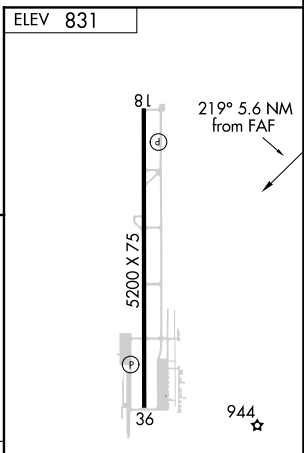
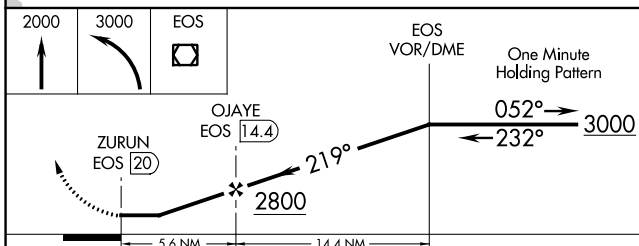
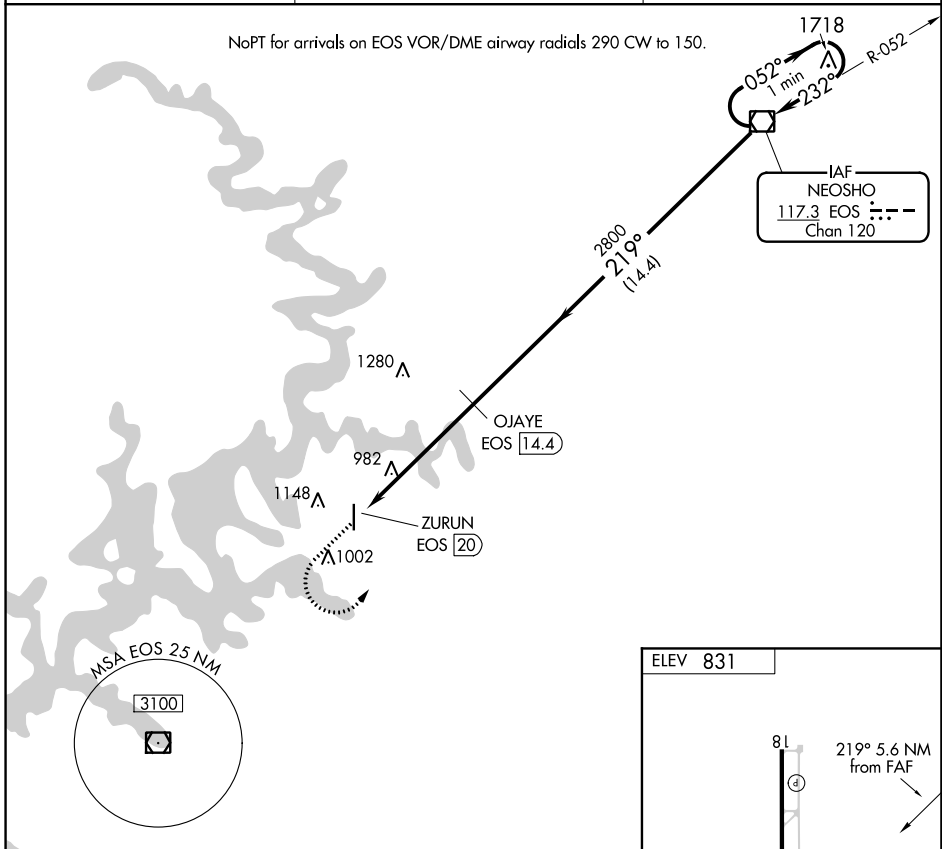
VOR/DME EOS 117.3 Chan 120	APP CRS 219°	Rwy Idg TDZE Apt Elev	N/A N/A 831
--	------------------------	-----------------------------	--

VOR/DME-A

GROVE MUNI (GMJ)

▽ MISSED APPROACH: Climb to 2000 then climbing left turn to 3000 direct EOS VOR/DME and hold.

AWOS-3 119.025	KANSAS CITY CENTER 128.8 354.1	UNICOM 122.8 (CTAF)
--------------------------	--	-------------------------------



CATEGORY	A	B	C	D
C CIRCLING	1500-1 669 (700-1)	1500-1¼ 669 (700-1¼)	1500-1¾ 669 (700-1¾)	NA

MIRL Rwy 18-36

SC-1, 25 FEB 2021 to 25 MAR 2021

SC-1, 25 FEB 2021 to 25 MAR 2021

GROVE, OKLAHOMA
Amdt 1A 13AUG20

36°36'N-94°44'W

GROVE MUNI (GMJ)

VOR/DME-A