

LOC I-GMU <b>109.7</b>	APP CRS <b>006°</b>	Rwy Idg <b>5393</b> TDZE <b>1015</b> Apt Elev <b>1048</b>
---------------------------	------------------------	---

# ILS Z or LOC Z RWY 1

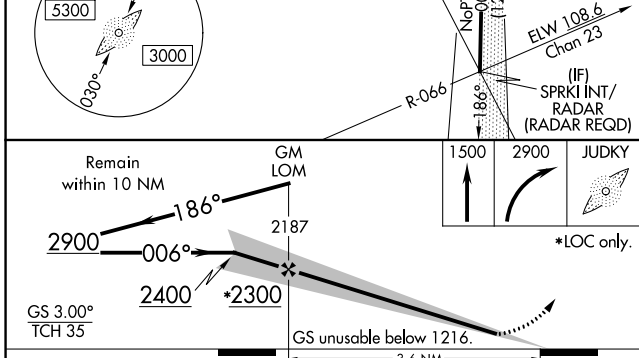
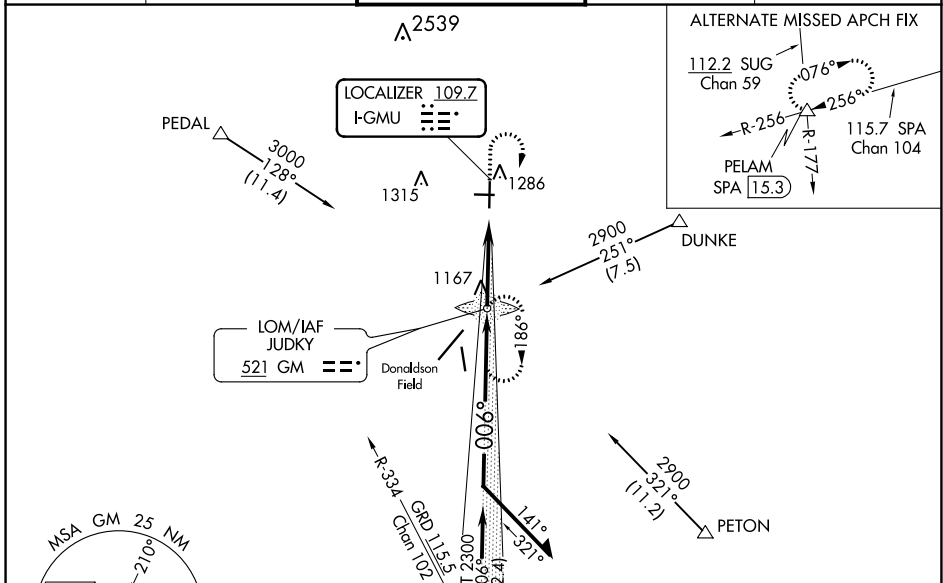
GREENVILLE DOWNTOWN (GMU)

ADF required.

**ASR** When local altimeter setting not received, use Greer altimeter setting and increase DA to 1245, increase all MDAs 40 feet and visibility S-LOC 1 Cat C and D 1/8 SM and Circling Cat C visibility 1/4 SM. Inop table does not apply to S-LS 1.

**MALSIF** MISSED APPROACH: Climb to 1500 then climbing right turn to 2900 direct JUDKY LOM and hold, continue climb-in-hold to 2900.

ATIS ★ <b>127.075</b>	GREER APP CON★ <b>118.8 270.275</b>	GREENVILLE TOWER★ <b>119.9 (CTAF) 257.7</b>	GND CON <b>121.25</b>	UNICOM <b>122.95</b>
--------------------------	--	--	--------------------------	-------------------------



ELEV 1048	TDZE 1015
REIL Rwy 28 REIL Rwy 19 MIRL Rwy 10-28 HIRL Rwy 1-19	
006° 3.6 NM from FAF	
FAF to MAP 3.6 NM	
Knots	60 90 120 150 180
Min:Seq	3:36 2:24 1:48 1:26 1:12

CATEGORY	A	B	C	D
S-ILS 1	1216-3/4		201 (200-3/4)	
S-LOC 1	1540-3/4	525 (500-3/4)	1540-1/4	525 (500-1/4)
<b>C</b> CIRCLING	1620-1	572 (600-1)	1780-2 732 (800-2)	1860-2 3/4 812 (900-2 3/4)

SE-2, 25 FEB 2021 to 25 MAR 2021

SE-2, 25 FEB 2021 to 25 MAR 2021