

WAAS CH 97328 W13A	APP CRS 131°	Rwy Idg TDZE Apt Elev	7000 208 208
---------------------------------	------------------------	-----------------------------	---

RNAV (GPS) RWY 13

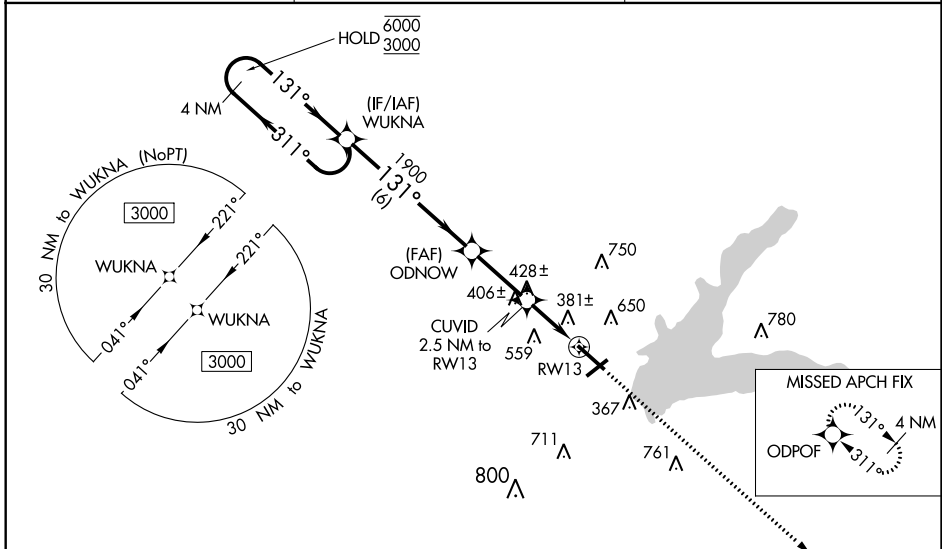
GRENADA MUNI (GNF)

RNP APCH.

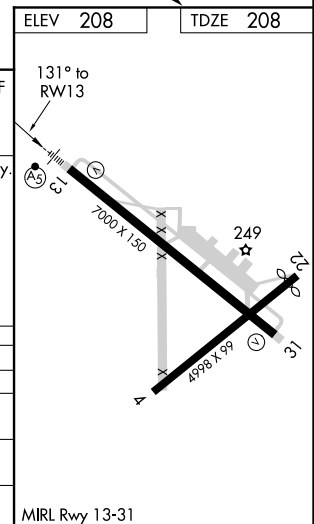
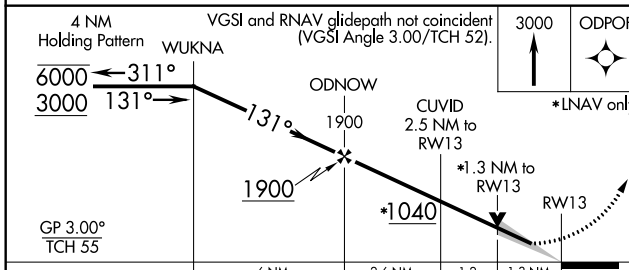
For uncompensated Baro-VNAV systems, procedure NA below -9°C or above 54°C. Baro-VNAV and VDP NA when using Greenwood altimeter setting. For inop ALS, increase LNAV/VNAV all Cats and LNAV Cat C/D visibility to 1½ SM. When local altimeter setting not received, use Greenwood altimeter setting: Increase all DAs 65 feet; increase all MDAs 80 feet and visibility LNAV Cats C and D and Circling all Cats ¼ SM. For inop ALS when using Greenwood altimeter setting, increase LPV all Cats visibility to ¾ SM and LNAV/VNAV all Cats visibility to 1½ SM. Circling Rwy 4, 22 NA at night.

MALSR MISSED APPROACH: Climb to 3000 direct ODPOF and hold.

AWOS-3PT 118.025	MEMPHIS CENTER 128.5 381.4	UNICOM 122.8 (CTAF)
----------------------------	--------------------------------------	-------------------------------



ELEV 208	TDZE 208
-----------------	-----------------



CATEGORY	A	B	C	D
LPV DA		453-1/2	245 (300-1/2)	
LNAV/VNAV DA		666-1 1/8	458 (500-1 1/8)	
LNAV MDA	680-1/2	472 (500-1/2)	680-1	472 (500-1)
CIRCLING	1000-1	792 (800-1)	1000-2 1/4	1060-2 3/4
			792 (800-2 1/4)	852 (900-2 3/4)

MIRL Rwy 13-31

SC-4, 25 FEB 2021 to 25 MAR 2021

SC-4, 25 FEB 2021 to 25 MAR 2021