

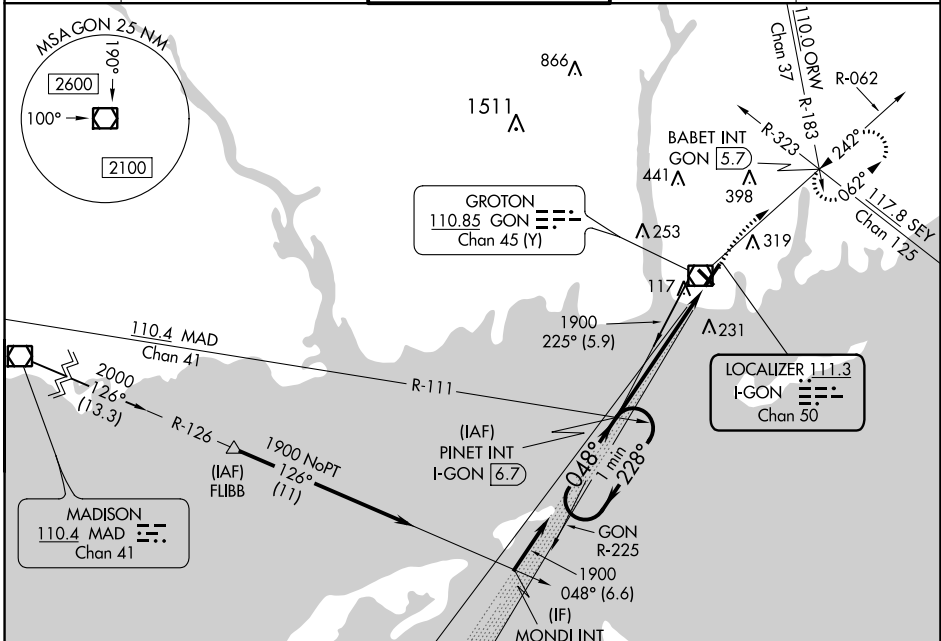
LOC/DME I-GON 111.3 Chan 50	APP CRS 048°	Rwy Idg TDZE Apt Elev	5000 8 9
--	------------------------	-----------------------------	-------------------------------------

ILS or LOC RWY 5

GROTON-NEW LONDON (GON)

<p>⚠ Night landing: Rwy 15 NA. For inoperative MALSR, increase S-LOC 5 Cat C/D visibility to 1 3/4.</p> <p>**RVR 1800 authorized with the use of FD or AP or HUD to DA.</p>	<p>MALSR</p>	<p>MISSED APPROACH: Climbing right turn to 2000 on GON VOR/DME R-062 to BABET Int and hold, continue climb-in-hold to 2000.</p>
---	---------------------	--

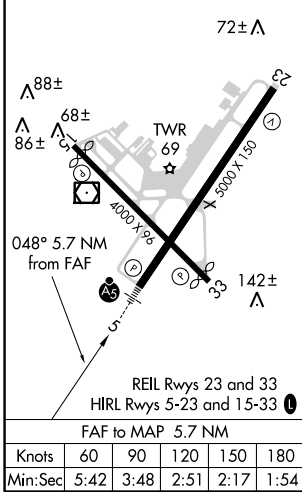
ATIS 127.0	PROVIDENCE APP CON * 125.75 319.2	GROTON TOWER * 125.6 (CTAF) 236.775	GND CON 121.65 236.775	CLNC DEL * 119.85
----------------------	---	---	----------------------------------	-----------------------------



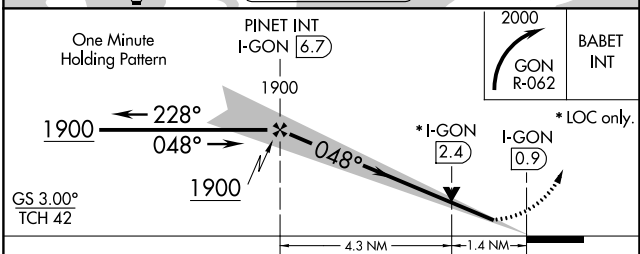
NE-1, 25 FEB 2021 to 25 MAR 2021

NE-1, 25 FEB 2021 to 25 MAR 2021

ELEV 9	D	TDZE 8
--------	----------	--------



Procedure NA for arrivals on HTO VORTAC airway radials 052 CW 096.



CATEGORY	A	B	C	D
S-ILS 5	**208/24 200 (200-1/2)			
S-LOC 5	500/24	492 (500-1/2)	500/50	492 (500-1)
CIRCLING	580-1 571 (600-1)	620-1 611 (700-1)	620-1 3/4 611 (700-1 3/4)	620-2 611 (700-2)