

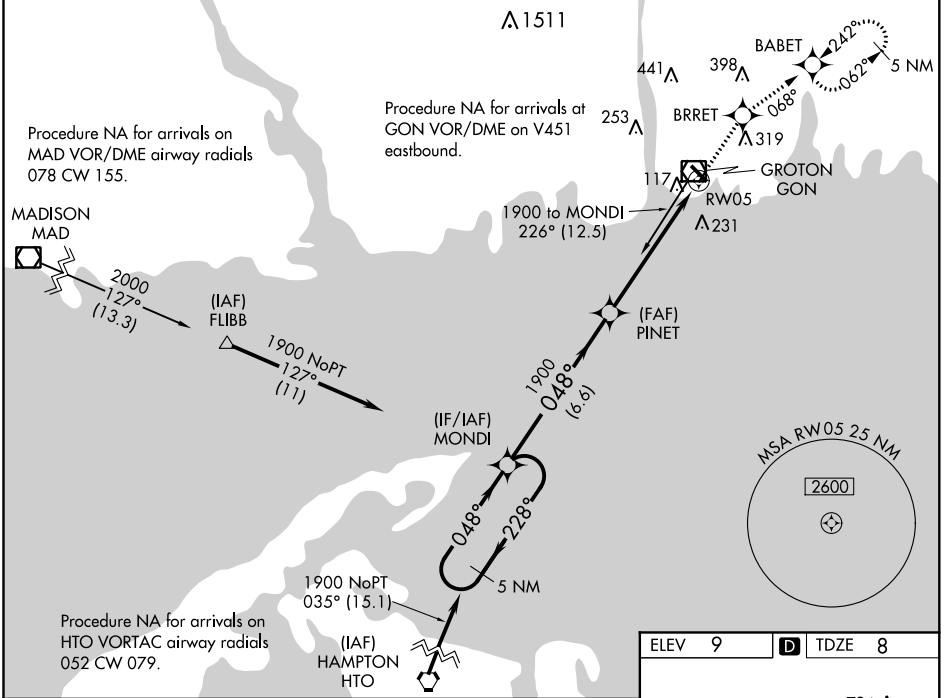
WAAS CH 45521 W05A	APP CRS 048°	Rwy Idg TDZE Apt Elev	5000 8 9
--	------------------------	-----------------------------	-------------------------------------

RNAV (GPS) RWY 5

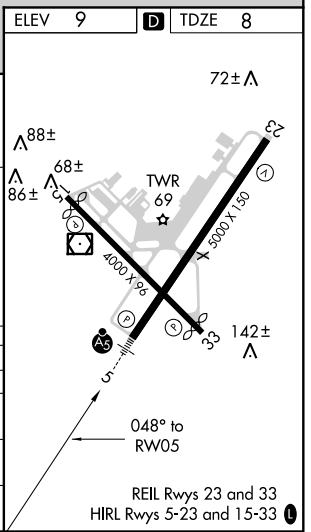
GROTON-NEW LONDON (GON)

<p>▼ For uncompensated Baro-VNAV systems, LNAV/VNAV NA below -15°C (5°F) or above 54°C (130°F). DME/DME RNP-0.3 NA. Night landing: Rwy 15 NA. For inop MALSR, increase LPV all Cats visibility to RVR 5000 and LNAV Cat C/D visibility to 1½.</p>	<p>MALSR</p>	<p>MISSED APPROACH: Climb to 2000 direct BRRET and on track 068° to BABET and hold, continue climb-in-hold to 2000.</p>
--	--------------	---

ATIS 127.0	PROVIDENCE APP CON * 125.75 319.2	GROTON TOWER * 125.6 (CTAF) 236.775	GND CON 121.65 236.775	CLNC DEL * 119.85
----------------------	---	---	----------------------------------	-----------------------------



5 NM Holding Pattern	MONDI	PINET	2000	BRRET	BABET
	1900 ← 228°	1900 → 048°	↑	✦	tr 068° ✦
GP 3.00° TCH 42	* 1.4 NM to RW05		* LNAV only		
	6.6 NM	4.3 NM	1.4 NM	RW05	
CATEGORY	A	B	C	D	
LPV DA	292/24		284 (300-½)		
LNAV/VNAV DA	533-1⅜		525 (600-1⅝)		
LNAV MDA	500/24	492 (500-½)	500/50	492 (500-1)	
CIRCLING	580-1 571 (600-1)	620-1 611 (700-1)	620-1¼ 611 (700-1¾)	620-2 611 (700-2)	



NE-1, 25 FEB 2021 to 25 MAR 2021

NE-1, 25 FEB 2021 to 25 MAR 2021