

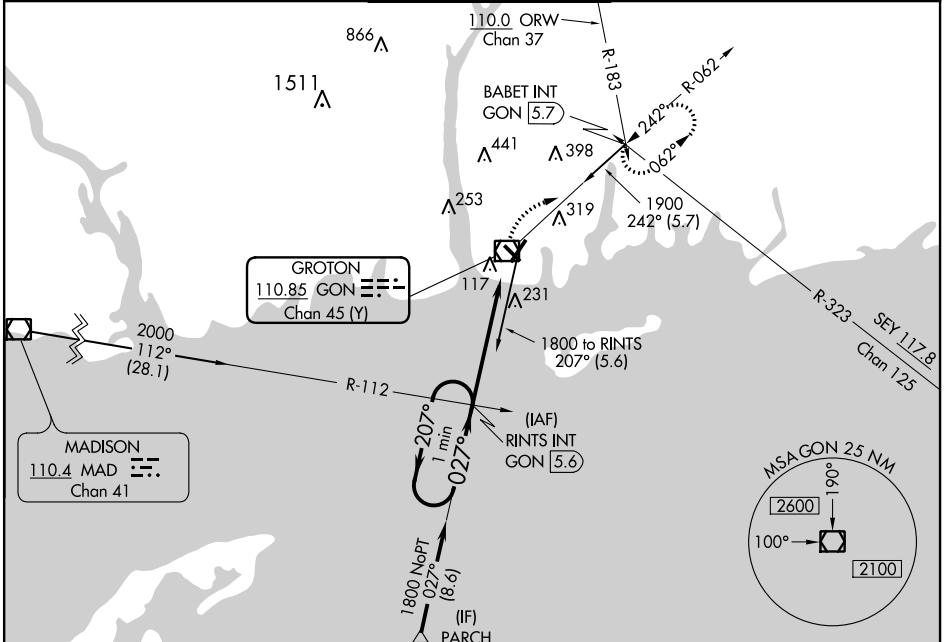
VOR/DME GON 110.85 Chan 45 (Y)	APP CRS 027°	Rwy Idg TDZE Apt Elev 5000 8 9
---	------------------------	--

VOR RWY 5

GROTON-NEW LONDON (GON)

Inoperative table does not apply to Cat D. Night landing: Rwy 15 NA at night.	MALS R	MISSED APPROACH: Climbing right turn to 2000 via GON R-062 to BABET INT/GON 5.7 DME and hold, continue climb-in-hold to 2000.

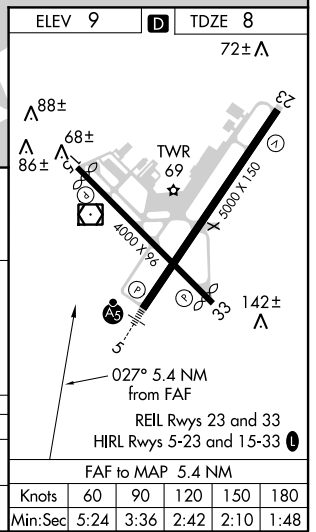
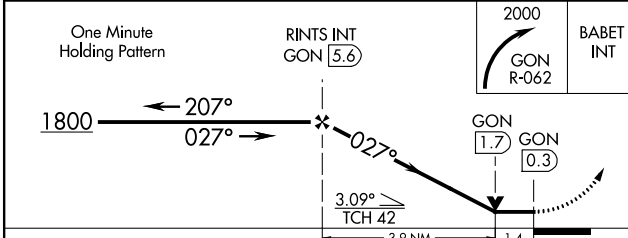
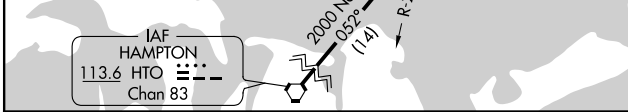
ATIS 127.0	PROVIDENCE APP CON * 125.75 319.2	GROTON TOWER * 125.6 (CTAF) 236.775	GND CON 121.65 236.775	CLNC DEL * 119.85
----------------------	---	---	----------------------------------	-----------------------------



NE-1, 25 FEB 2021 to 25 MAR 2021

NE-1, 25 FEB 2021 to 25 MAR 2021

Procedure NA for arrival on HTO VORTAC
airway radials 052 CW 096.



CATEGORY	A	B	C	D
S-5	500/24	492 (500-½)	500/40 492 (500-¾)	500-1½ 492 (500-1½)
CIRCLING	580-1 571 (600-1)	620-1 611 (700-1)	620-1¾ 611 (700-1¾)	620-2 611 (700-2)