

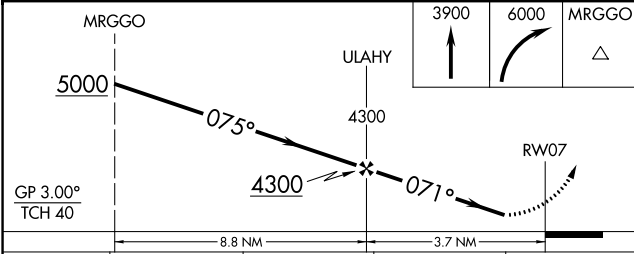
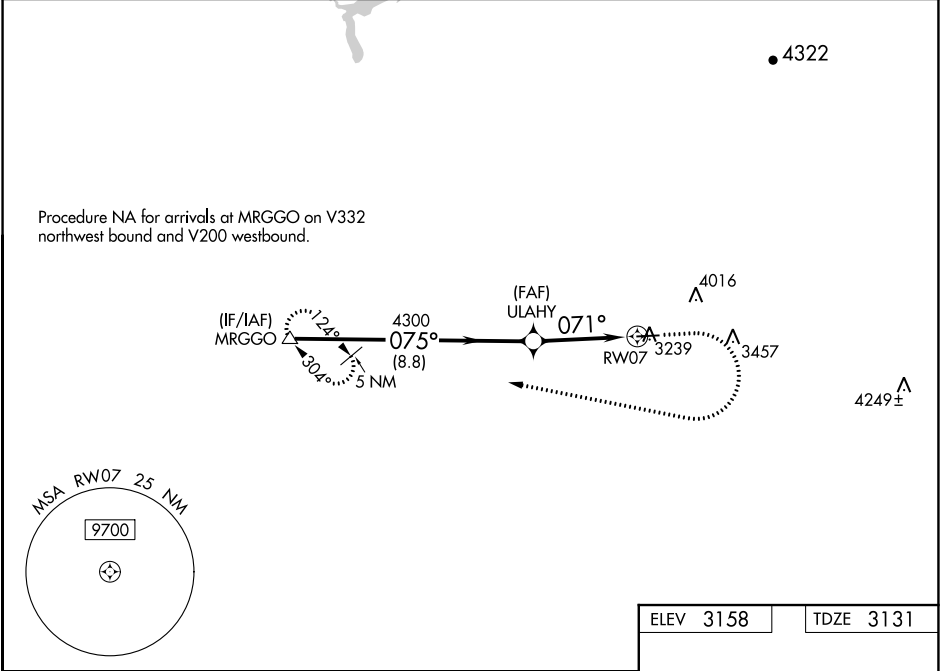
WAAS CH <b>90240</b> <b>W07A</b>	APP CRS <b>071°</b>	Rwy Idg TDZE Apt Elev	<b>4657</b> <b>3131</b> <b>3158</b>
--	------------------------	-----------------------------	---

# RNAV (GPS) RWY 7

NEVADA COUNTY (GOO)

RNP APCH.	MISSED APPROACH: (Do not exceed 250K until MRGGO) Climb to 3900 then climbing right turn to 6000 direct MRGGO and hold.
<p>▼</p> <p>⚠ Circling NA north of Rwy 7-25. Rwy 7 helicopter visibility reduction below 3/4 SM NA. For uncompensated Baro-VNAV systems, LNAV/VNAV NA below -21°C or above 54°C.</p>	

AWOS-3 <b>121.325</b>	NORCAL APP CON <b>125.4 259.1</b>	UNICOM <b>122.725 (CTAF) 0</b>
--------------------------	--------------------------------------	-----------------------------------



ELEV 3158	TDZE 3131
REIL Rwy 7 and 25 MIRL Rwy 7-25 0	

CATEGORY	A	B	C	D
LPV DA		3606-1 3/8	475 (500-1 3/8)	
LNAV/VNAV DA		3772-1 7/8	641 (700-1 7/8)	
LNAV MDA	3860-1	729 (800-1)	3860-2	729 (800-2)
CIRCLING	3860-1	702 (800-1)	3880-2 722 (800-2)	3880-2 1/4 722 (800-2 1/4)

SW-2, 25 FEB 2021 to 25 MAR 2021

SW-2, 25 FEB 2021 to 25 MAR 2021