

WAAS CH 86409 W36A	APP CRS 004°	Rwy Idg TDZE 776 Apt Elev 777	5502
--	------------------------	---	-------------

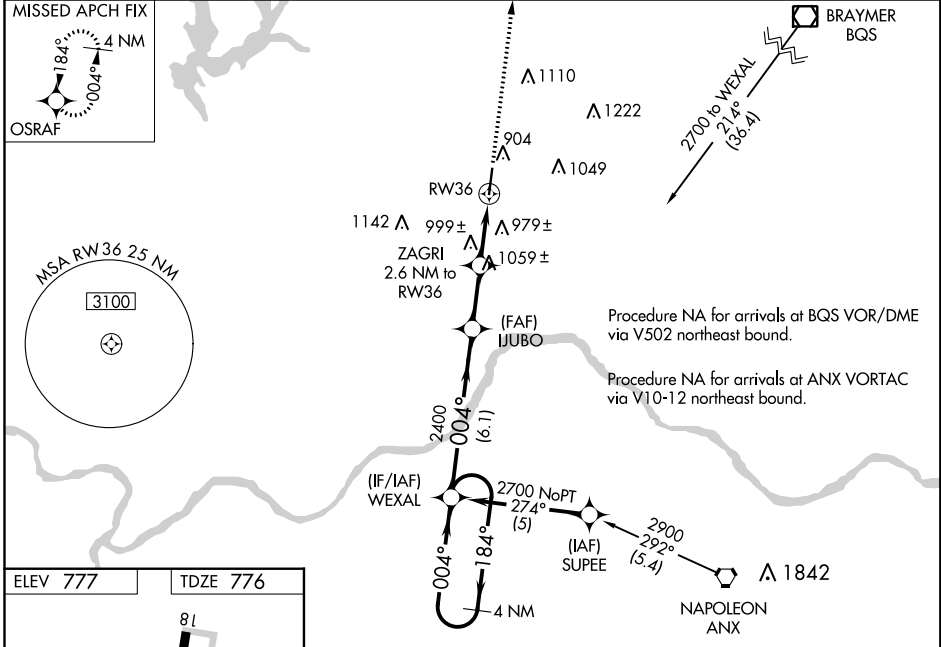
RNAV (GPS) RWY 36

MIDWEST NATIONAL AIR CENTER (GPH)

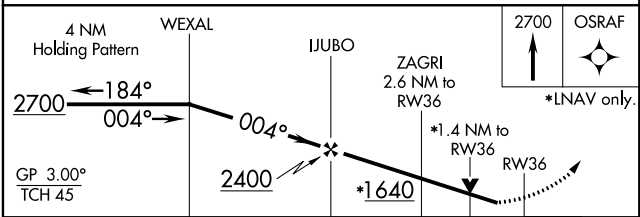
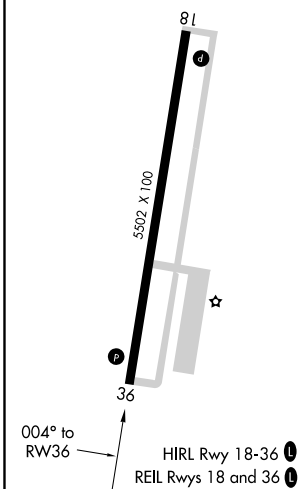
NA DME/DME RNP-0.3 NA. Baro-VNAV NA when using Kansas City Intl altimeter setting. For uncompensated Baro-VNAV systems, LNAV/VNAV NA below -16°C (4°F) or above 54°C (130°F). Visibility reduction by helicopters NA. Obtain local altimeter setting on CTAF; when not received use Kansas City Intl altimeter setting and increase all DA 79 feet and all LPV and LNAV/VNAV visibilities ¼ mile; increase all MDA 80 feet and LNAV and Circling Cat C visibility ¼ mile. VDP NA when using Kansas City Intl altimeter setting.

MISSED APPROACH: Climb to 2700 direct OSRAF and hold.

AWOS-3 120.275	KANSAS CITY APP CON 118.4 307.35	CLNC DEL 118.2	UNICOM 122.7 (CTAF) 0
--------------------------	--	--------------------------	---------------------------------



ELEV 777	TDZE 776
----------	----------



CATEGORY	A	B	C	D
LPV DA	1105-1¼	329 (400-1¼)		NA
LNAV/VNAV DA	1341-2	565 (600-2)		NA
LNAV MDA	1260-1	484 (500-1)	1260-1¼ 484 (500-1¼)	NA
CIRCLING	1300-1	523 (600-1)	1320-1½ 543 (600-1½)	NA

NC-3, 25 FEB 2021 to 25 MAR 2021

NC-3, 25 FEB 2021 to 25 MAR 2021