

VOR/DME TTT 113.1 Chan 78	APP CRS 356°	Rwy Idg TDZE 589 Apt Elev 589	4001
---	------------------------	---	-------------

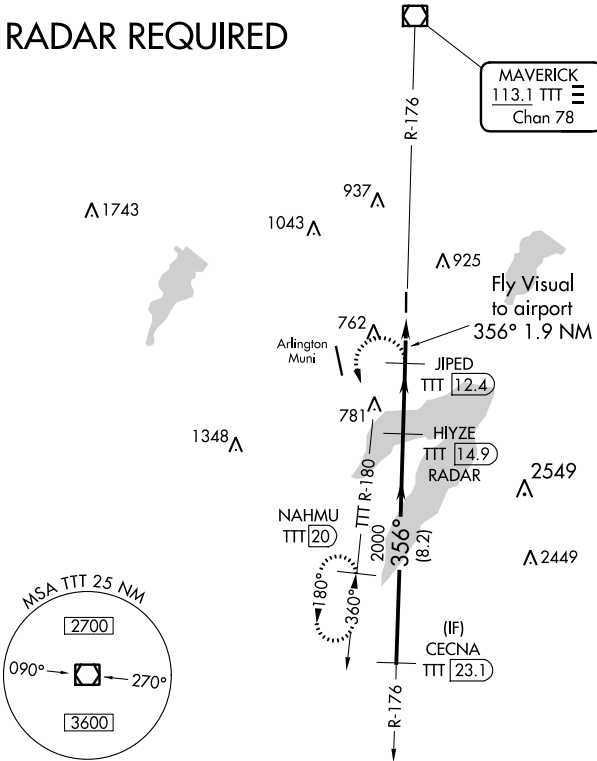
VOR/DME RWY 35

GRAND PRAIRIE MUNI (GPM)

⚠ If local altimeter setting not received, use Arlington Muni altimeter setting. MISSED APPROACH: Climbing left turn to 2300 via TTT R-180 to NAHMU/20 DME and hold.

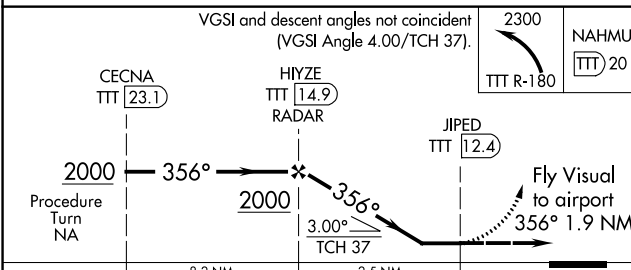
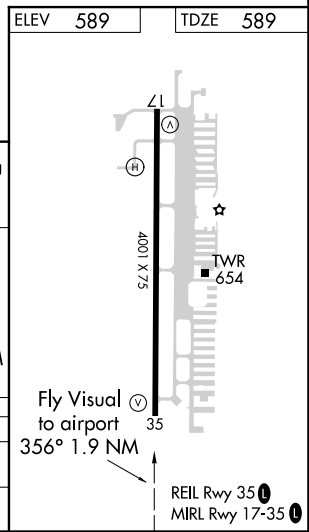
AWOS-3P 118.475	REGIONAL APP CON 135.975 379.9	GRAND PRAIRIE TOWER ★ 128.55 (CTAF) 0	GND CON 121.15	UNICOM 123.075
---------------------------	--	---	--------------------------	--------------------------

RADAR REQUIRED



SC-2, 25 FEB 2021 to 25 MAR 2021

SC-2, 25 FEB 2021 to 25 MAR 2021



CATEGORY	A	B	C	D
S-35	1040-2¼	451 (500-2¼)	NA	
CIRCLING	NA			