

APP CRS	Rwy Idg	5756
164°	TDZE	1327
	Apt Elev	1356

RNAV (GPS) RWY 16

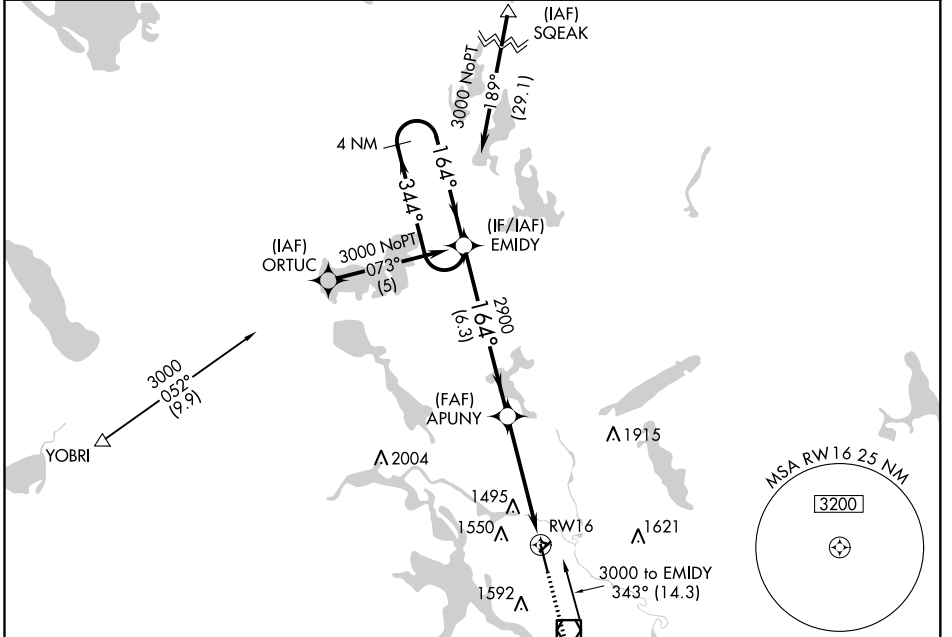
GRAND RAPIDS/ITASCA COUNTY-GORDON NEWSTROM FIELD (GPZ)

RNP APCH.

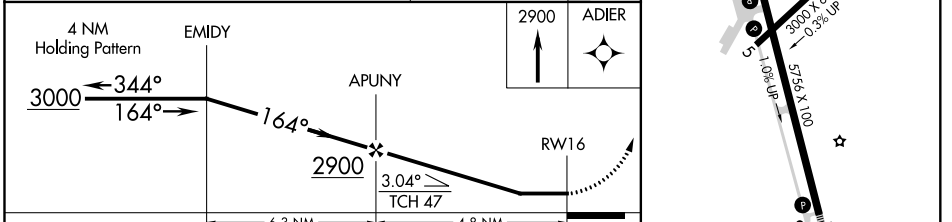
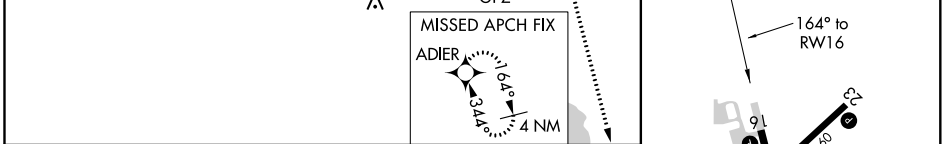
⚠ Circling Rwy 5 NA at night. Circling NA for Cat D east of Rwy 16-34. When local altimeter setting not received, use Hibbing altimeter setting and increase all MDAs 80 feet, increase LNAV Cat C visibility $\frac{1}{8}$ SM and Circling Cats C/D visibility $\frac{1}{4}$ SM.

MISSED APPROACH: Climb to 2900 direct ADIER and hold.

AWOS-3PT 118.425	MINNEAPOLIS CENTER 127.9 281.45	UNICOM 122.8 (CTAF) 0
----------------------------	---	---------------------------------



ELEV 1356	TDZE 1327
-----------	-----------



CATEGORY	A	B	C	D
LNAV MDA	1760-1	433 (500-1)	1760-1 $\frac{1}{4}$ 433 (500-1 $\frac{1}{4}$)	1760-1 $\frac{1}{2}$ 433 (500-1 $\frac{1}{2}$)
C CIRCLING	1900-1	544 (600-1)	1900-1 $\frac{1}{2}$ 544 (600-1 $\frac{1}{2}$)	2000-2 644 (700-2)

MIRL Rwy 5-23 0
HIRL Rwy 16-34 0
REIL Rws 5, 16, 23 0

RNAV (GPS) RWY 16

NC-1, 25 FEB 2021 to 25 MAR 2021

NC-1, 25 FEB 2021 to 25 MAR 2021