

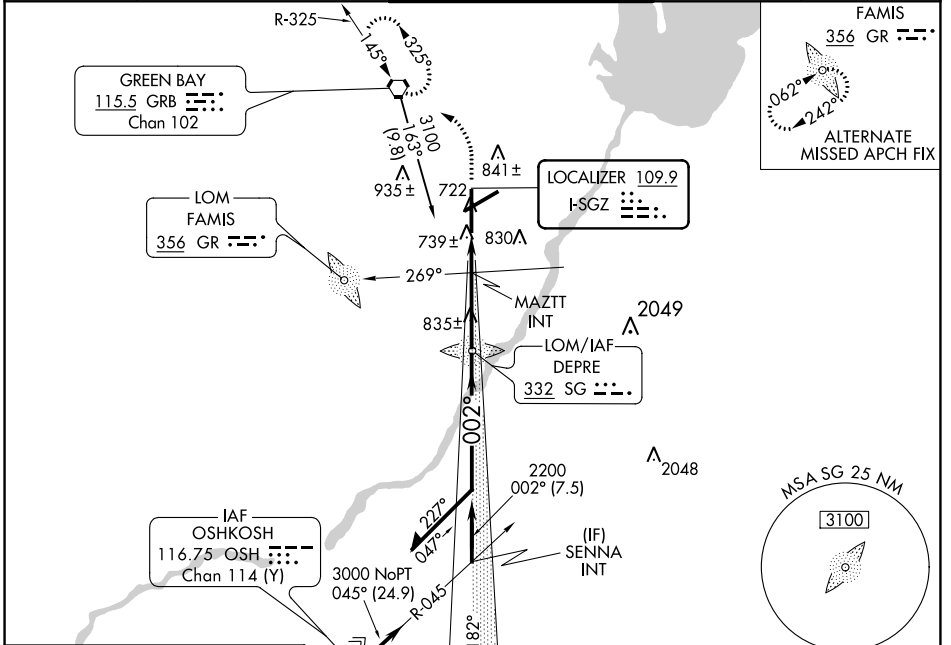
LOC I-SGZ 109.9	APP CRS 002°	Rwy Idg 8201
		TDZE 684
		Apt Elev 695

ILS or LOC RWY 36

GREEN BAY-AUSTIN STRAUBEL INTL (GRB)

<p>NA For inoperative MALSR, increase S-LOC 36 MAZTT fix minimums Cat D visibility to RVR 5000.</p> <p>ASR ** RVR 1800 authorized with the use of FD or AP or HUD to DA.</p>	<p>MALSR</p>	<p>MISSED APPROACH: Climb to 1400 then climbing left turn to 2500 direct GRB VORTAC and hold.</p>
---	---------------------	--

ATIS 124.1	GREEN BAY APP CON * 119.4 338.2	GREEN BAY TOWER * 118.7 (CTAF) 257.8	GND CON 121.9	CLNC DEL 121.75
----------------------	---	--	-------------------------	---------------------------

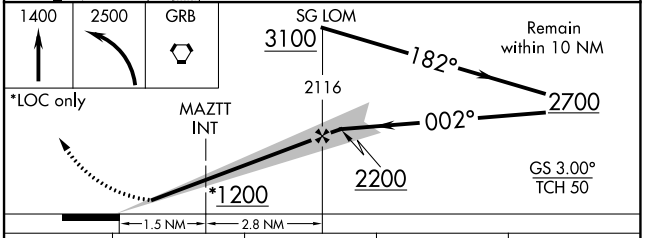


ELEV 695	D	TDZE 684
----------	----------	----------

REIL Rwy 18
HIRL Rwy 6-24 and 18-36

FAF to MAP 4.3 NM

Knots	60	90	120	150	180
Min:Sec	4:18	2:52	2:09	1:43	1:26



CATEGORY	A	B	C	D
S-ILS 36	**884/24 200 (200-½)			
S-LOC 36	1200/24	516 (600-½)	1200/50 516 (600-1)	1200/60 516 (600-1½)
CIRCLING	1200-1	505 (600-1)	1200-1½ 505 (600-1½)	1260-2 565 (600-2)
MAZTT FIX MINIMUMS				
S-LOC 36	980/24 296 (300-½)			980/40 296 (300-¾)
CIRCLING	1200-1	505 (600-1)	1200-1½ 505 (600-1½)	1260-2 565 (600-2)

EC-3, 25 FEB 2021 to 25 MAR 2021

EC-3, 25 FEB 2021 to 25 MAR 2021