


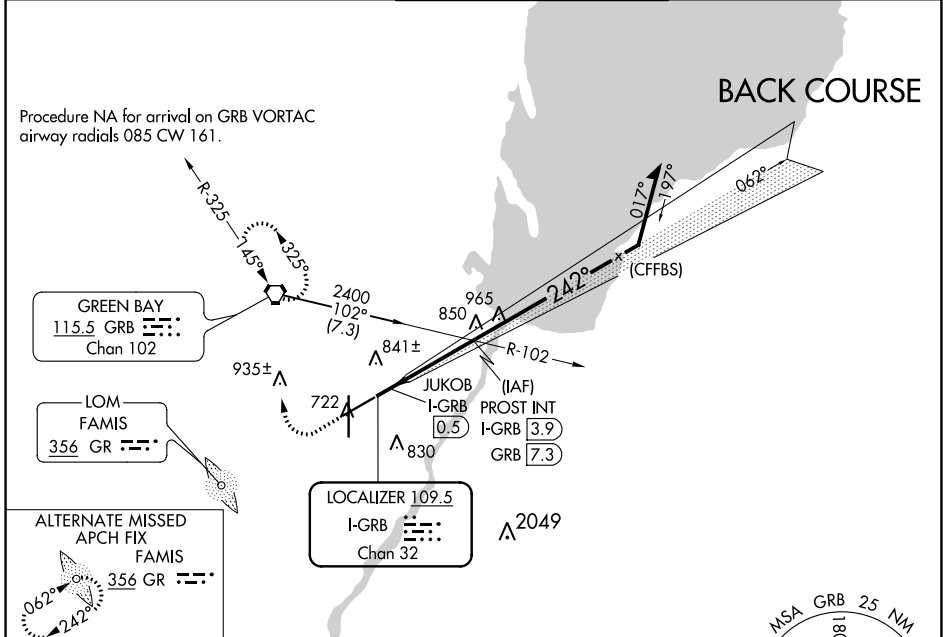
LOC/DME I-GRB <b>109.5</b>	APP CRS <b>242°</b>	Rwy Idg TDZE Apt Elev	<b>7699</b> <b>682</b> <b>695</b>
Chan <b>32</b>			

# LOC BC RWY 24

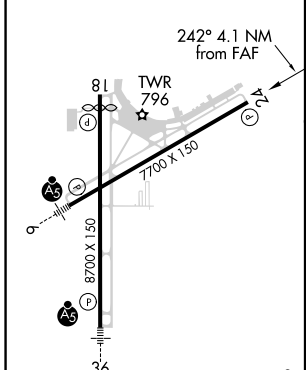
GREEN BAY-AUSTIN STRAUBEL INTL (GRB)

 <p>ASR</p>	<p>MISSED APPROACH: Climb to 1500 then climbing right turn to 2500 direct GRB VORTAC and hold.</p>
--	--

ATIS <b>124.1</b>	GREEN BAY APP CON* <b>119.4 338.2</b>	GREEN BAY TOWER* <b>118.7 (CTAF) 257.8</b>	GND CON <b>121.9</b>	CLNC DEL <b>121.75</b>
----------------------	--	---	-------------------------	---------------------------



ELEV 695	<b>D</b>	TDZE 682
----------	----------	----------



1500	2500	GRB	PROST INT I-GRB 3.9	Remain within 10 NM
Disregard GS indications.				
JUKOB I-GRB 0.5				
2100				
TCH 50				
Use I-GRB DME when on the localizer course.				
0.7 3.4 NM				

	A	B	C	D
S-24	1100-1 418 (500-1)		1100-1½ 418 (500-1½)	
CIRCLING	1200-1 505 (600-1)		1200-1½ 505 (600-1½)	1260-2 565 (600-2)

EC-3, 25 FEB 2021 to 25 MAR 2021

EC-3, 25 FEB 2021 to 25 MAR 2021