

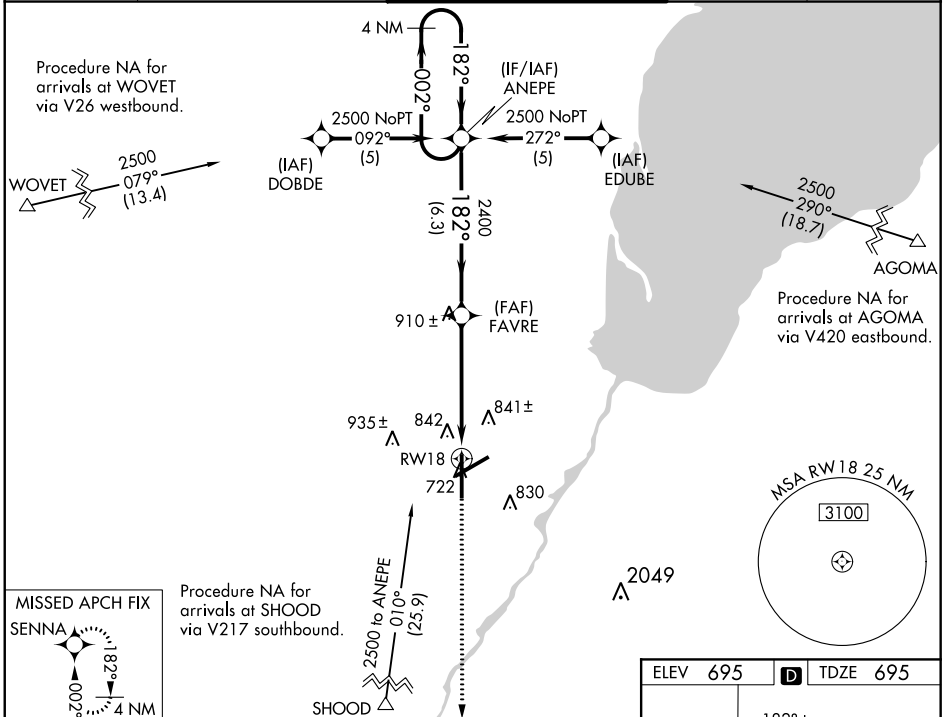
WAAS CH 42802 W18A	APP CRS 182°	Rwy Idg 8201
		TDZE 695
		Apt Elev 695

RNAV (GPS) RWY 18

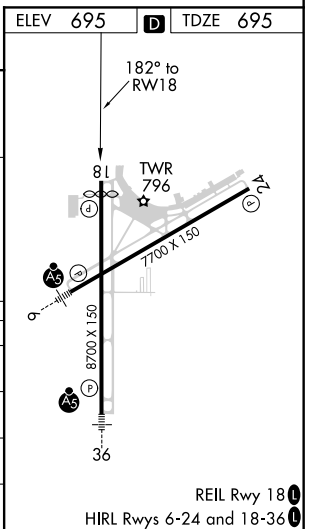
GREEN BAY-AUSTIN STRAUBEL INTL (GRB)

<p>For uncompensated Baro-VNAV systems, LNAV/VNAV NA below -16° C (4° F) or above 47° C (117° F). DME/DME RNP-0.3 NA. Visibility reduction by helicopters NA.</p>	<p>MISSED APPROACH: Climb to 2500 direct SENNA and hold.</p>	
	<p>ATIS 124.1</p>	<p>GREEN BAY APP CON* 119.4 338.2</p>

<p>GND CON 121.9</p>	<p>CLNC DEL 121.75</p>
---------------------------------	-----------------------------------



<p>4 NM Holding Pattern</p> <p>ANEPE</p> <p>2500</p> <p>002°</p> <p>182°</p> <p>182°</p> <p>782°</p> <p>2400</p> <p>FAVRE</p> <p>RW18</p> <p>*1.3 NM to RW18 *LNAV only</p> <p>6.3 NM</p> <p>3.8 NM</p> <p>1.3 NM</p>		<p>2500</p> <p>SENNA</p> <p>81</p> <p>TWR 796</p> <p>7700 X 150</p> <p>36</p> <p>8700 X 150</p>		
CATEGORY	A	B	C	D
LPV DA	979-1 284 (300-1)			
LNAV/VNAV DA	1187-1¾ 492 (500-1¾)			
LNAV MDA	1160-1 465 (500-1)	1160-1¼ 465 (500-1¼)		1160-1½ 465 (500-1½)
CIRCLING	1200-1 505 (600-1)	1200-1½ 505 (600-1½)		1260-2 565 (600-2)



EC-3, 25 FEB 2021 to 25 MAR 2021

EC-3, 25 FEB 2021 to 25 MAR 2021