

WAAS CH 63015 W06A	APP CRS 062°	Rwy Idg 7699 TDZE 692 Apt Elev 695
--	------------------------	---

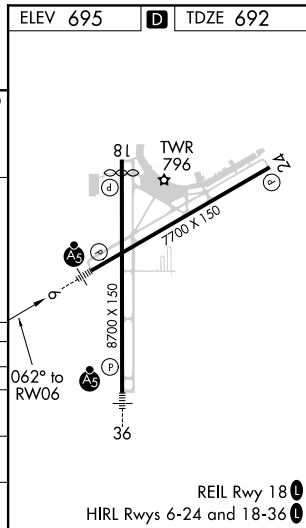
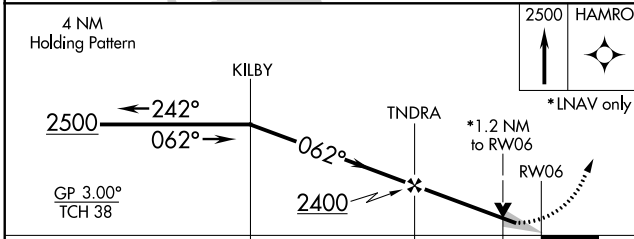
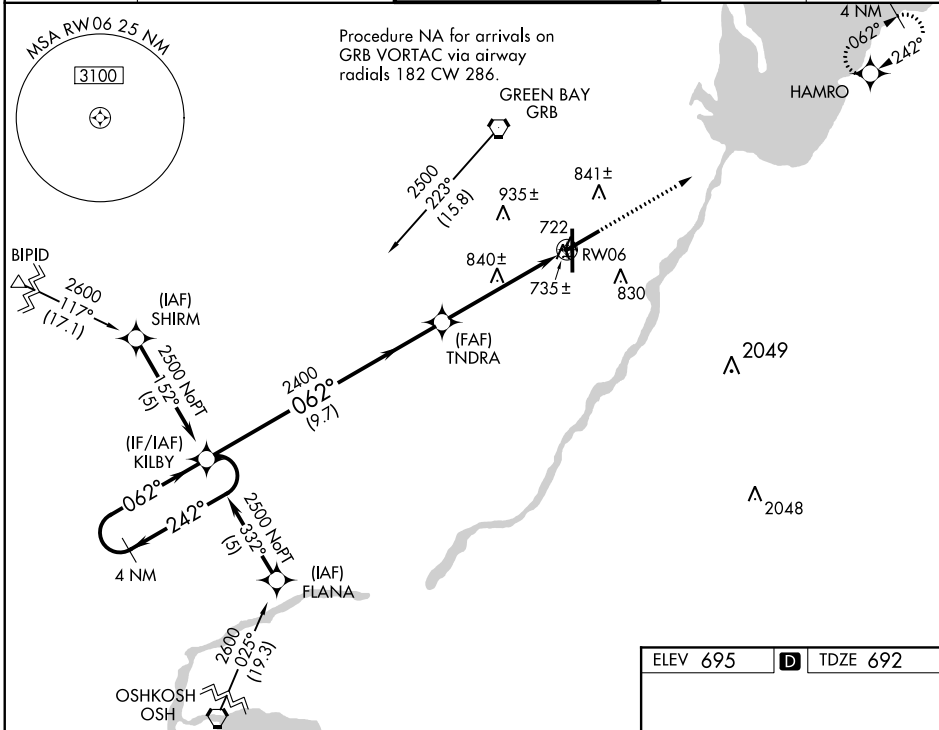
RNAV (GPS) RWY 6

GREEN BAY-AUSTIN STRAUBEL INTL (GRB)

▼ For uncompensated Baro-VNAV systems, LNAV/VNAV NA below -1.6°C (4°F) or above 47°C (116°F). DME/DME RNP-0.3 NA. For inoperative MALSR, increase ASR LNAV/VNAV Cat D visibility to RVR 5000 and LNAV Cat D visibility to RVR 6000.

MALSR MISSED APPROACH: Climb to 2500 direct HAMRO and hold.

ATIS 124.1	GREEN BAY APP CON* 119.4 338.2	GREEN BAY TOWER* 118.7 (CTAF) 0 257.8	GND CON 121.9	CLNC DEL 121.75
----------------------	--	---	-------------------------	---------------------------



CATEGORY	A	B	C	D
LPV DA	892/24		200 (200-½)	
LNAV/VNAV DA	1000/24 308 (400-½)		1000/40 308 (400-¾)	
LNAV MDA	1100/24 408 (500-½)		1100/50 408 (500-1)	
CIRCLING	1200-1 505 (600-1)	1200-1½ 505 (600-1½)		1260-2 565 (600-2)

EC-3, 25 FEB 2021 to 25 MAR 2021

EC-3, 25 FEB 2021 to 25 MAR 2021