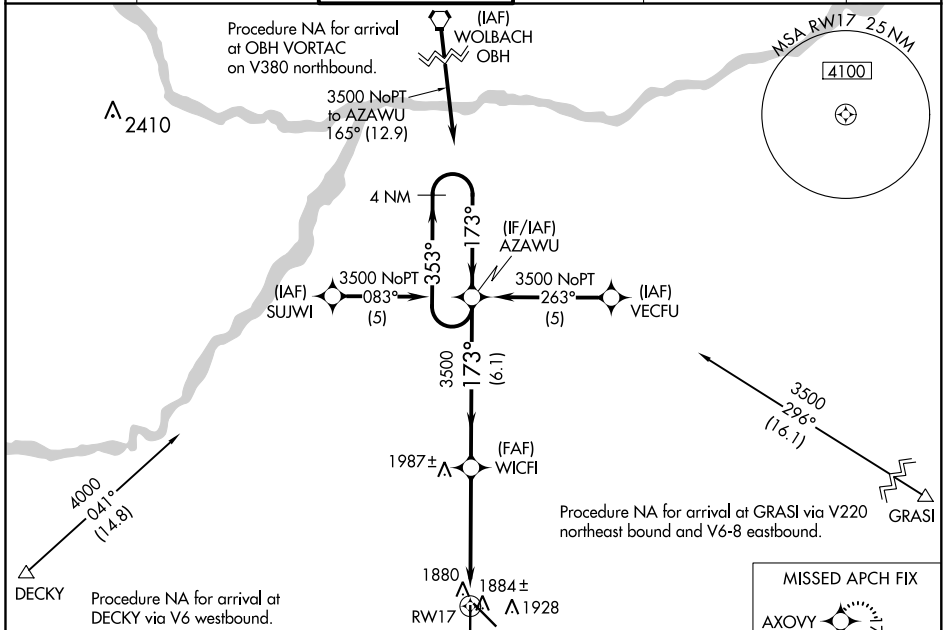


WAAS CH <b>60999</b> <b>W17A</b>	APP CRS <b>173°</b>	Rwy Idg 7002 TDZE <b>1844</b> Apt Elev <b>1847</b>
--	------------------------	---

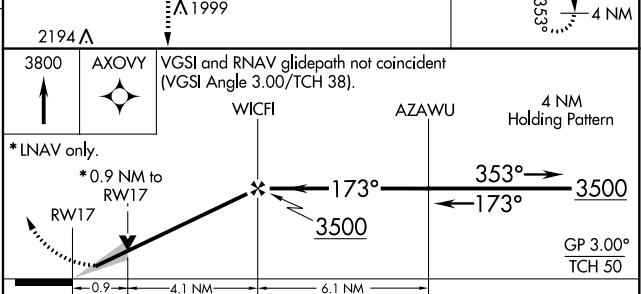
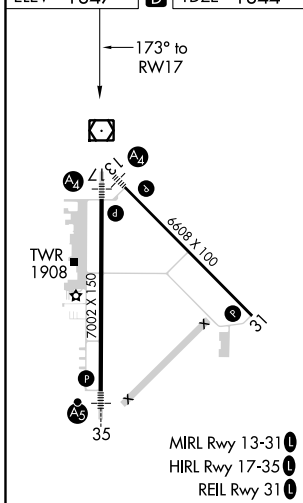
# RNAV (GPS) RWY 17

CENTRAL NEBRASKA RGNL (GRI)

<p><b>⚠</b> DME/DME RNP-0.3 NA. Baro-VNAV NA below -18°C (0°F). If local altimeter setting not received, use Aurora altimeter setting and increase all DAs/MDAs 60 feet. Baro-VNAV and VDP NA when using Aurora altimeter setting. Inoperative table does not apply to LPV.</p>	<p>MALS</p>		<p>MISSED APPROACH: Climb to 3800 direct AXOVY and hold.</p>		
	<p>ATIS <b>127.4</b></p>	<p>MINNEAPOLIS CENTER <b>119.4 278.8</b></p>	<p>GRAND ISLAND TOWER* <b>118.2 (CTAF) 0 259.3</b></p>	<p>GND CON <b>121.9 259.3</b></p>	<p>CLNC DEL <b>121.9</b> (when tower closed)</p>



ELEV <b>1847</b>	<b>D</b>	TDZE <b>1844</b>
------------------	----------	------------------



CATEGORY	A	B	C	D
LPV DA	2094- <sup>3</sup> / <sub>4</sub> 250 (300- <sup>3</sup> / <sub>4</sub> )			
LNAV/VNAV DA	2138- <sup>3</sup> / <sub>4</sub> 294 (300- <sup>3</sup> / <sub>4</sub> )			2138-1 294 (300-1)
LNAV MDA	2160- <sup>3</sup> / <sub>4</sub> 316 (400- <sup>3</sup> / <sub>4</sub> )		2160-1 316 (400-1)	
CIRCLING	2300-1 453 (500-1)		2300-1 <sup>1</sup> / <sub>2</sub> 453 (500-1 <sup>1</sup> / <sub>2</sub> )	
			2400-2 553 (600-2)	

NC-2, 25 FEB 2021 to 25 MAR 2021

NC-2, 25 FEB 2021 to 25 MAR 2021