


WAAS CH <b>86799</b> <b>W35A</b>	APP CRS <b>353°</b>	Rwy Idg <b>7002</b> TDZE <b>1847</b> Apt Elev <b>1847</b>
--	------------------------	---

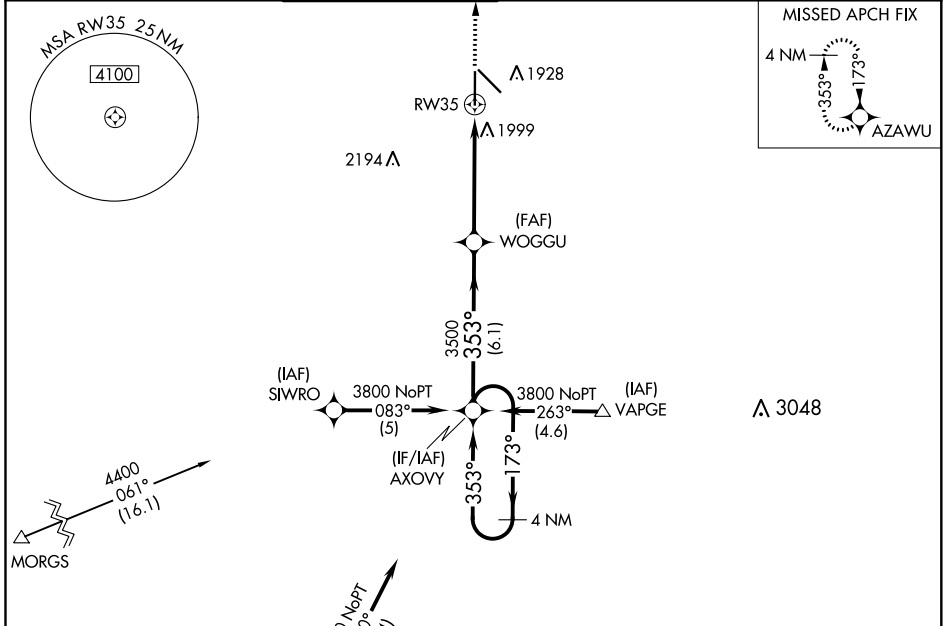
# RNAV (GPS) RWY 35

CENTRAL NEBRASKA RGNL (GRI)

**▼** DME/DME RNP-0.3 NA. Baro-VNAV NA below -18°C (0°F). If local altimeter setting not received, use Aurora altimeter setting and increase all DAs/MDAs 60 feet.  
**▲** Baro-VNAV and VDP NA when using Aurora altimeter setting. For inop MALSR increase LPV visibility to RVR 4000 all Cats.

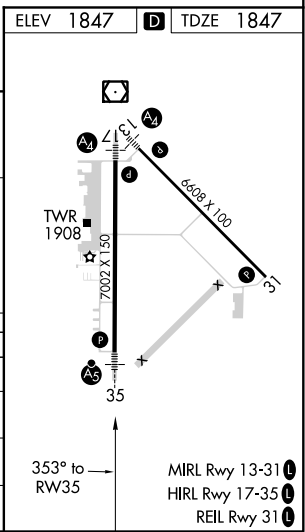
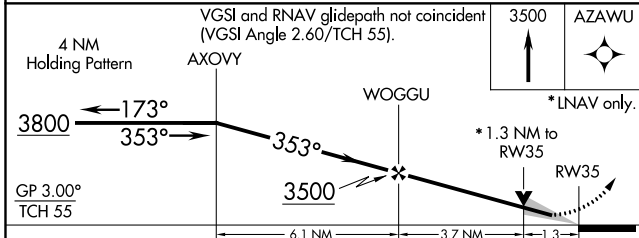
**MALSR**   
**MISSED APPROACH:**  
 Climb to 3500 direct AZAWU and hold.

ATIS <b>127.4</b>	MINNEAPOLIS CENTER <b>119.4 278.8</b>	GRAND ISLAND TOWER ★ <b>118.2 (CTAF) 259.3</b>	GND CON <b>121.9 259.3</b>	CLNC DEL <b>121.9</b> (when tower closed)	UNICOM <b>122.95</b>
----------------------	--	---	-------------------------------	---	-------------------------



Procedure NA for arrival at HSI VOR/DME on airway radials 006 CW 068.

(IAF) HASTINGS HSI



CATEGORY	A	B	C	D
LPV DA	2097/24		250 (300-½)	
LNAV/VNAV DA	2283/50		436 (500-1)	
LNAV MDA	2260/24	413 (500-½)	2260/40 413 (500-¾)	2260/50 413 (500-1)
CIRCLING	2300-1½		453 (500-1½)	
			2400-2 553 (600-2)	

NC-2, 25 FEB 2021 to 25 MAR 2021

NC-2, 25 FEB 2021 to 25 MAR 2021