

GOLDSBORO, NORTH CAROLINA

HI-ILS or LOC Z RWY 8

LOC I-GSB 109.3	APCH CRS 081°	Rwy ldg 11,760 TDZE 73 Arprt Elev 109
---------------------------	-------------------------	--

JAL-169 [USAF]

SEYMOUR JOHNSON AFB (KGSB)

ALSF-1

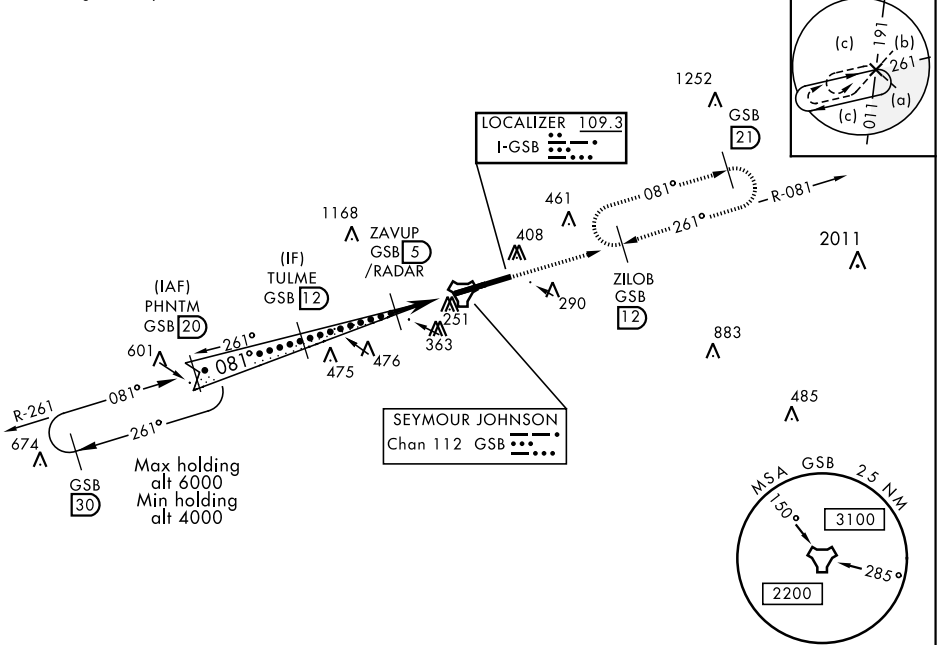
 MISSED APPROACH: Climb to 2300 via GSB R-081 to ZILOB and hold.

* When ALS inop, increase RVR to 40 and vis to 3/4 mile.

 ** When ALS inop, increase vis to 1 3/8 miles.

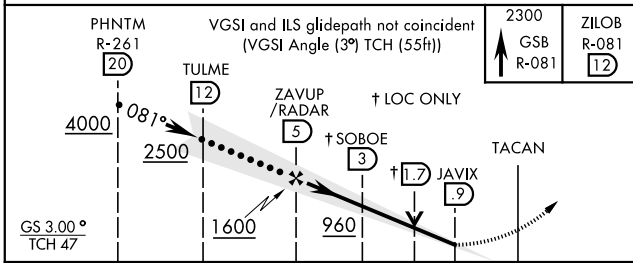
ATIS ★ 317.625	SEYMOUR JOHNSON APP CON 258°-110° 123.7 290.9 111°-257° 119.7 273.6	SEYMOUR JOHNSON TOWER ★ 126.25 370.875	GND CON 138.1 275.8	CLNC DEL 128.025 270.8
--------------------------	---	--	-------------------------------	----------------------------------

*** Circling N of Rwy 8-26 not authorized.



RADAR or DME REQUIRED

EMERG SAFE ALT 100 NM 3700



ELEV	109	TDZE	73
HIRL Rwy 8-26			
FAF to MAP 4.1 NM			
Knots	120	140	160 180 200
Min:Sec	2:03	1:45	1:32 1:22 1:14

CATEGORY	C	D	E
S-ILS 8*	273/24	200 (200-1/2)	
S-LOC 8**	560/50	487 (500-1)	
*** CIRCLING	680-1 1/2	700-2	760-2 1/4
	571 (600-1 1/2)	591 (600-2)	651 (700-2 1/4)

GOLDSBORO, NORTH CAROLINA

35° 20' N-77° 58' W

SEYMOUR JOHNSON AFB (KGSB)

Amtd 7 07DEC17

HI-ILS or LOC Z RWY 8

SE-2, 25 FEB 2021 to 25 MAR 2021

SE-2, 25 FEB 2021 to 25 MAR 2021