

HI-TACAN Z RWY 26

TACAN Chan 112	GSB	APCH CRS 261°	Rwy ldg 11,760 TDZE 109 Arprt Elev 109
--------------------------	-----	-------------------------	---

JAL-169 [USAF]

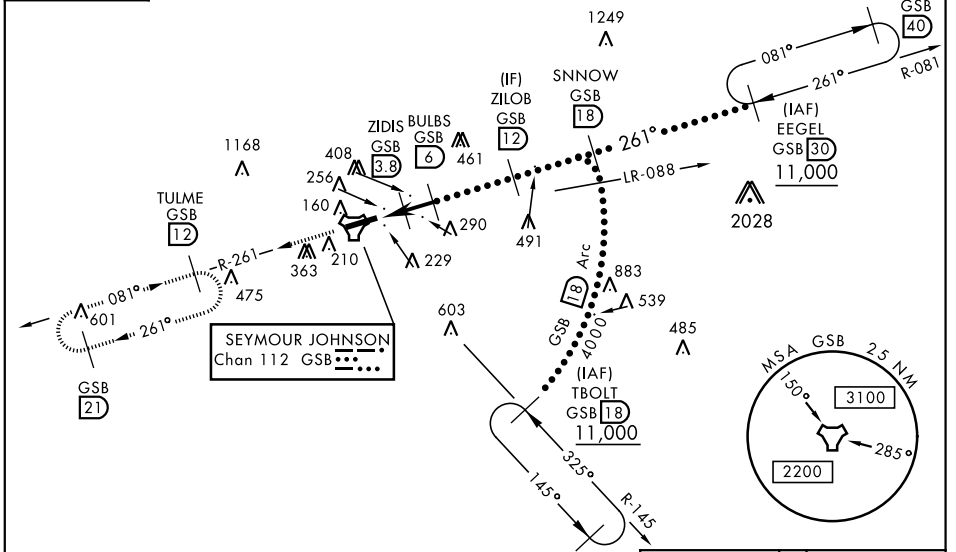
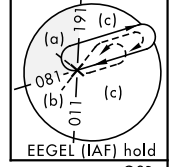
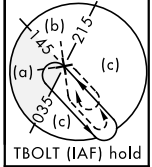
SEYMOUR JOHNSON AFB (KGSB)

▼ * When ALS inop, increase vis to 1¼ miles.
** Circling N of Rwy 8-26 not authorized.



MISSED APPROACH: Climb to 2200 via GSB R-261 to TULME and hold.

ATIS ★ 317.625	SEYMOUR JOHNSON APP CON 258°-110° 123.7 290.9 111°-257° 119.7 273.6	SEYMOUR JOHNSON TOWER ★ 126.25 370.875	GND CON 138.1 275.8	CLNC DEL 128.025 270.8
--------------------------	---	--	-------------------------------	----------------------------------

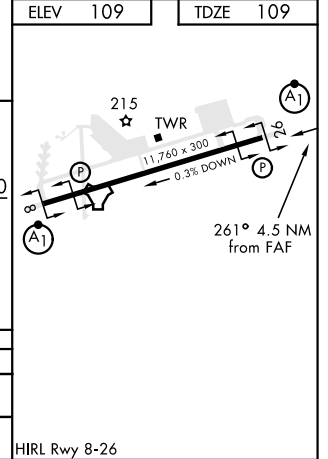
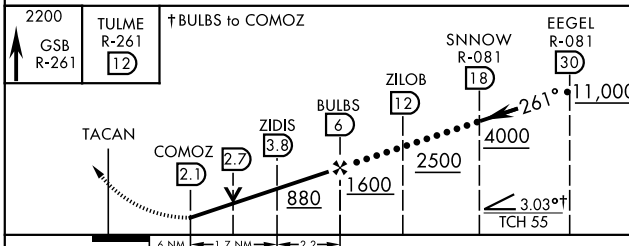


SE-2, 25 FEB 2021 to 25 MAR 2021

SE-2, 25 FEB 2021 to 25 MAR 2021

ELEV 109	TDZE 109
----------	----------

EMERG SAFE ALT 100 NM 3700



CATEGORY	C	D	E
S-26*	540/40	431 (500-¾)	
CIRCLING**	680-1½ 571 (600-1½)	700-2 591 (600-2)	760-2¼ 651 (700-2¼)

HIRL Rwy 8-26

HI-TACAN Z RWY 26