

GOLDSBORO, NORTH CAROLINA

RNAV (GPS) RWY 26

APCH CRS 261°	Rwy Idg 11,760
	TDZE 109
	Arprt Elev 109

AL-169 (USAF)

SEYMOUR JOHNSON AFB (KGSB)

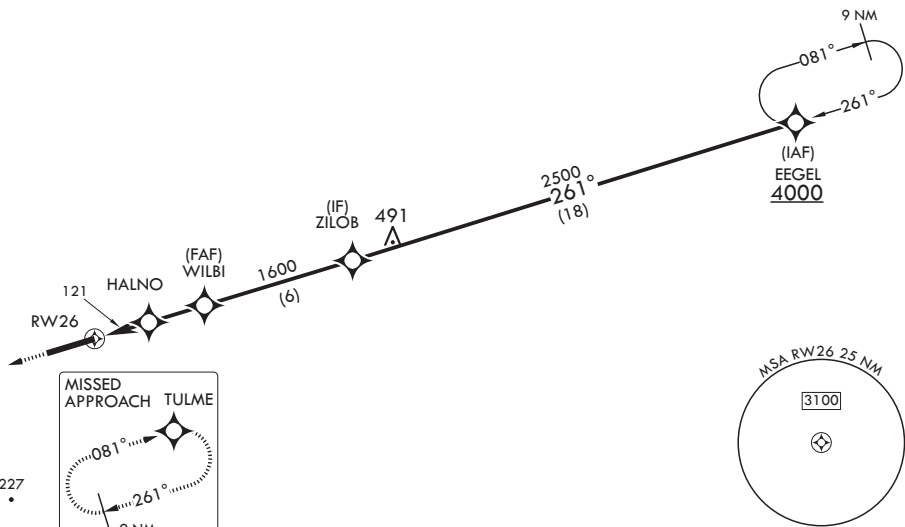
V * When ALS inop, increase vis to 1 3/8 miles.
 ** When ALS inop, increase CAT AB RVR to 55, vis to 1 mile; CAT CDE vis to 1 1/4 miles.
 *** Circling NA N of Rwy 8-26.

ALSF-1 MISSED APPROACH: Climb to 2200 direct TULME and hold.

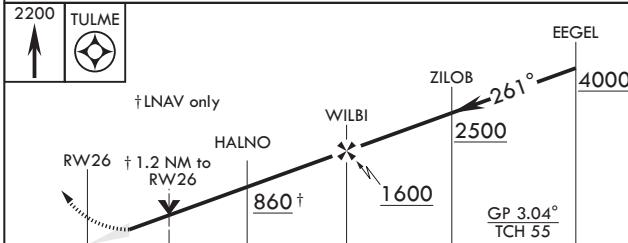
ATIS* 317.625	APP CON 119.7 273.6 111° -257° 123.7 290.9 258° -110°	TOWER 126.25 370.875	GND CON 138.1 275.8	CLNC DEL 128.025 270.8
-------------------------	---	--------------------------------	-------------------------------	----------------------------------

DME/DME RNP -0.3 NA

For uncompensated Baro-VNAV systems, procedure NA below -15°C (5°F) or above 53°C (128°F).

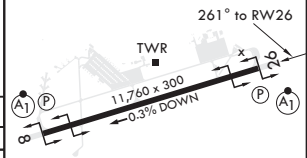


EMERG SAFE ALT 100 NM 3700



ELEV 109	TDZE 109
----------	----------

CATEGORY	A	B	C	D	E
LNAV/VNAV DA*	510/40		401	(500-3/4)	
LNAV MDA**	540/24	431 (500-1/2)	540/40	431	(500-3/4)
C CIRCLING***	620-1	511 (600-1)	680-1 1/2 571 (600-1 1/2)	700-2 591 (600-2)	760-2 1/4 651 (700-2 1/4)



HIRL all Rwys

GOLDSBORO, NORTH CAROLINA

35°20'N - 77°58'W

SEYMOUR JOHNSON AFB (KGSB)

Amdt 4 02JAN20

RNAV (GPS) RWY 26

SE-2, 25 FEB 2021 to 25 MAR 2021

SE-2, 25 FEB 2021 to 25 MAR 2021