

GOLDSBORO, NORTH CAROLINA

# RNAV (GPS) RWY 8

APCH CRS <b>081°</b>	Rwy Idg <b>11,760</b>
	TDZE <b>73</b>
	Arpt Elev <b>109</b>

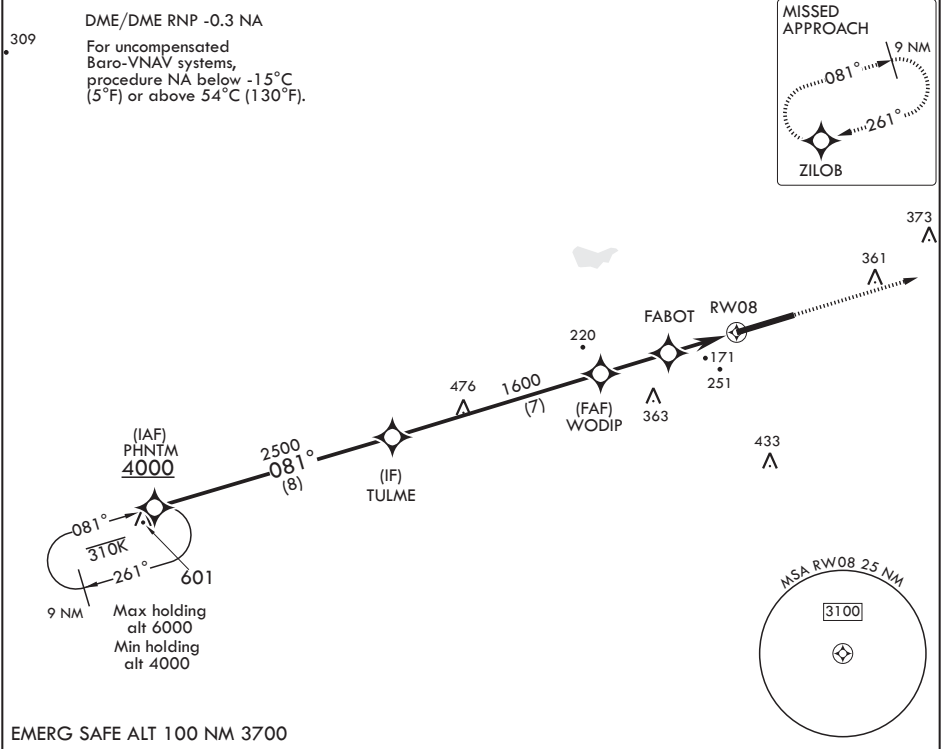
AL-169 (USAF)

SEYMOUR JOHNSON AFB (KGSB)

**V** \* When ALS inop, increase vis to 1 3/8 miles.  
 \*\* When ALS inop, increase CAT AB RVR to 55, vis to 1 mile; CAT CDE vis to 1 3/8 miles.  
 \*\*\* Circling NA N of Rwy 8-26.

ALSF-1 MISSED APPROACH: Climb to 2300 direct ZILOB and hold.

ATIS* <b>317.625</b>	APP CON <b>119.7 273.6 111° -257°</b> <b>123.7 290.9 258° -110°</b>	TOWER <b>126.25 370.875</b>	GND CON <b>138.1 275.8</b>	CLNC DEL <b>128.025 270.8</b>
-------------------------	---	--------------------------------	-------------------------------	----------------------------------



SE-2, 25 FEB 2021 to 25 MAR 2021

SE-2, 25 FEB 2021 to 25 MAR 2021

EMERG SAFE ALT 100 NM 3700

PHNTM 4000	TULME	WODIP	FABOT	RWY 8	2300 ZILOB ELEV 109 TDZE 73	
CATEGORY	A	B	C	D		E
LNAV/VNAV DA*	540/50		467	(500-1)		
LNAV MDA**	540/24	467 (500-1/2)	540/50	467		(500-1)
<b>C</b> CIRCLING***	620-1	511 (600-1)	680-1 1/2 571 (600-1 1/2)	700-2 591 (600-2)	760-2 1/4 651 (700-2 1/4)	

HIRL all Rwys

GOLDSBORO, NORTH CAROLINA

35°20'N - 77°58'W

SEYMOUR JOHNSON AFB (KGSB)

Amdt 5 02JAN20

# RNAV (GPS) RWY 8