

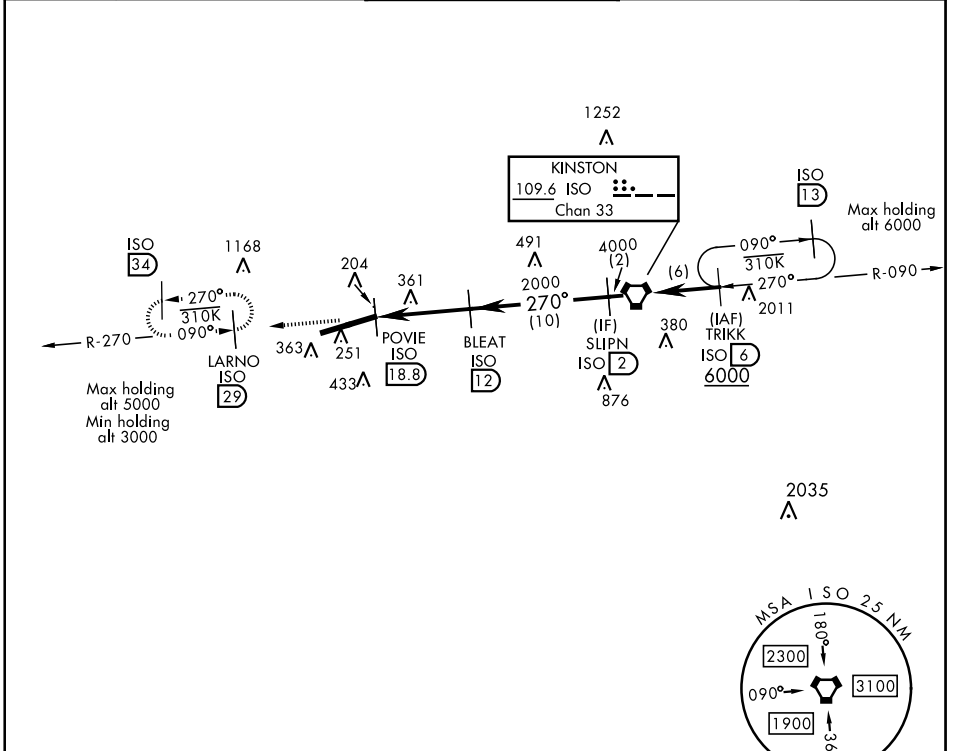
TACAN-A

KINSTON ISO 109.6 Chan 33	APCH CRS 270°	Rwy Idg TDZE Arprt Elev N/A N/A 109	AL-169 [USAF]	SEYMOUR JOHNSON AFB (KGSB)
---	-------------------------	---	---------------	----------------------------

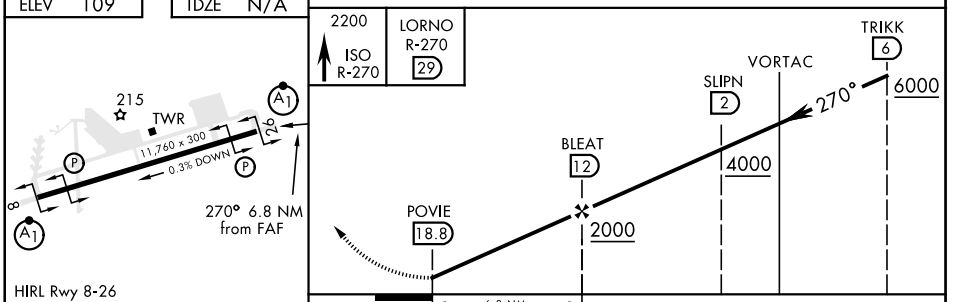
Circling not authorized from RWY 8 clockwise to RWY 26.

 MISSED APPROACH: Climb straight on VORTAC ISO R-270 to 29 DME (LARNO) and hold; continue climb and hold to 3000.

ATIS ★ 317.625	SEYMOUR JOHNSON APP CON 258°-110° 123.7 290.9 111°-257° 119.7 273.6	SEYMOUR JOHNSON TOWER ★ 126.25 370.875	GND CON 138.1 275.8	CLNC DEL 128.025 270.8
--------------------------	---	--	-------------------------------	----------------------------------



EMERG SAFE ALT 100 NM 4100



FAF to MAP 6.8 NM					
Knots	60	90	120	150	180
Min:Sec	6:48	4:32	3:24	2:43	2:16
CATEGORY	A	B	C	D	E
<input checked="" type="checkbox"/> CIRCLING	660-1	551 (600-1)	680-1½ 571 (600-1½)	700-2 591 (600-2)	760-2¼ 651 (700-2¼)

GOLDSBORO, NORTH CAROLINA 35° 20' N-77° 58' W SEYMOUR JOHNSON AFB (KGSB)

TACAN-A

SE-2, 25 FEB 2021 to 25 MAR 2021

SE-2, 25 FEB 2021 to 25 MAR 2021