

GOLDSBORO, NORTH CAROLINA

# TACAN Y RWY 26

TACAN Chan <b>112</b>	GSB <b>261°</b>	APCH CRS <b>261°</b>	Rwy ldg <b>11,760</b> TDZE <b>109</b> Arprt Elev <b>109</b>
-----------------------	-----------------	----------------------	---

AL-169 [USAF]

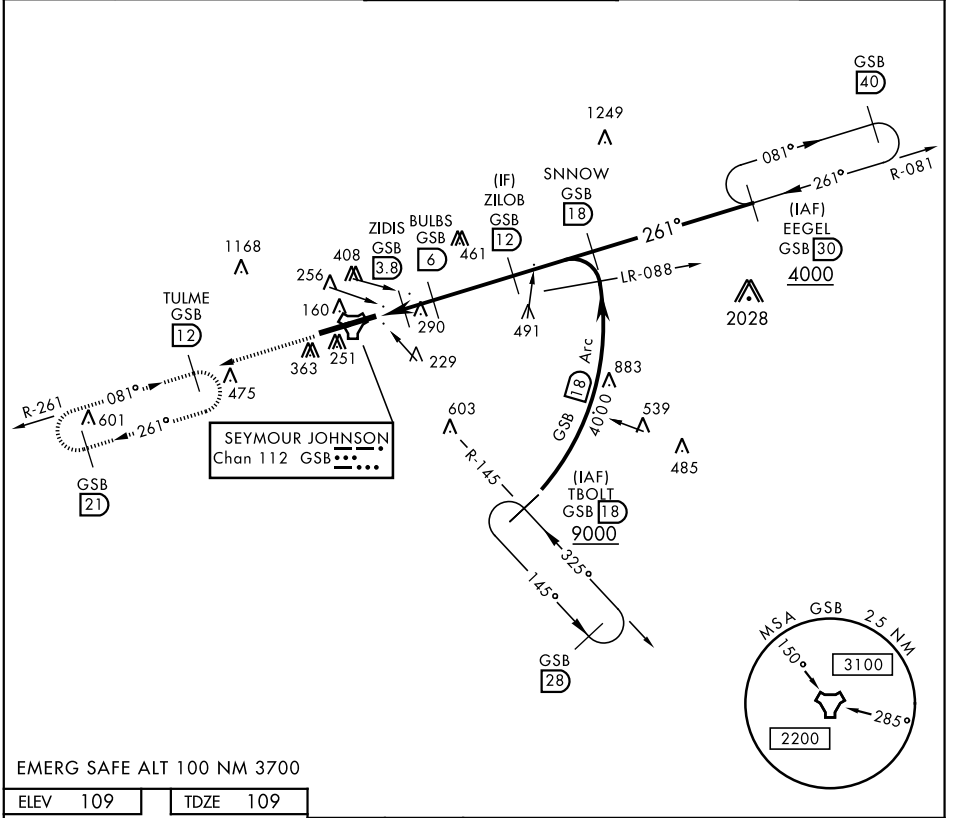
SEYMOUR JOHNSON AFB (KGSB)

▼ \* When ALS inop, increase CAT AB RVR to 55, vis to 1 mile, CAT CDE vis to 1½ miles.  
 \*\* Circling N of Rwy 8-26 not authorized.



MISSED APPROACH: Climb to 2200 via GSB R-261 to TULME and hold.

ATIS ★ <b>317.625</b>	SEYMOUR JOHNSON APP CON 258°-110° <b>123.7 290.9</b> 111°-257° <b>119.7 273.6</b>	SEYMOUR JOHNSON TOWER ★ <b>126.25 370.875</b>	GND CON <b>138.1 275.8</b>	CLNC DEL <b>128.025 270.8</b>
-----------------------	---	--	-------------------------------	----------------------------------

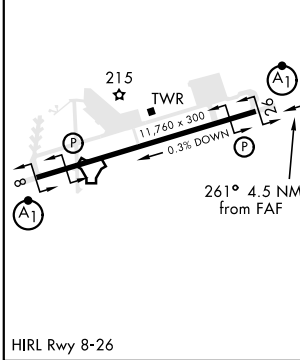


SE-2, 25 FEB 2021 to 25 MAR 2021

SE-2, 25 FEB 2021 to 25 MAR 2021

EMERG SAFE ALT 100 NM 3700

ELEV 109	TDZE 109
----------	----------



2200 GSB R-261	TULME R-261 12	† BULBS to COMOZ	SNNOW R-081 18	EEGEL R-081 30	
TACAN	COMOZ 2.1	ZIDIS 3.8	BULBS 6	ZILOB 12	
	880	1600	2500	4000	
	0.6 NM	1.7 NM	2.2 NM		
CATEGORY	A	B	C	D	E
S-26 *	540/24	431 (500-½)	540/40	431 (500-¾)	
☐ CIRCLING **	620-1	511 (600-1)	680-1½ 571 (600-1½)	700-2 591 (600-2)	760-2¼ 651 (700-2¼)

GOLDSBORO, NORTH CAROLINA

35° 20'N-77° 58'W

SEYMOUR JOHNSON AFB (KGSB)

Amdt 7 05DEC19

# TACAN Y RWY 26