

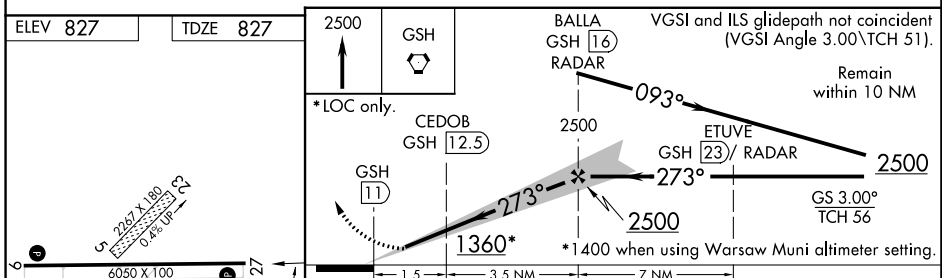
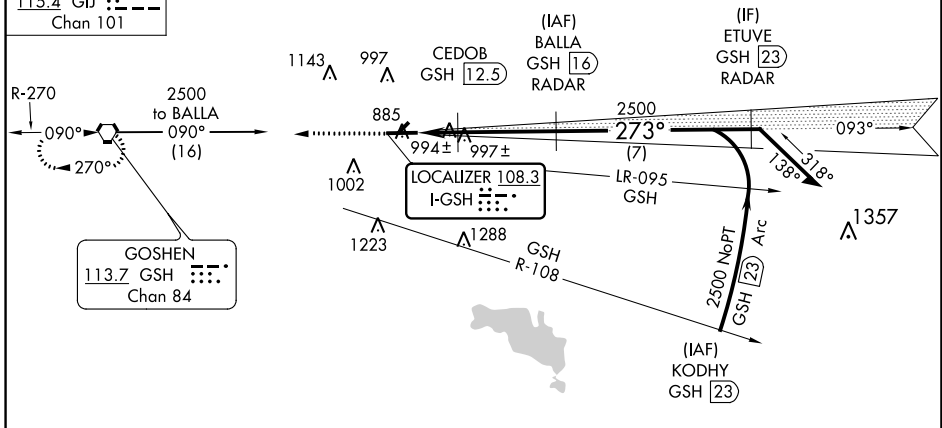
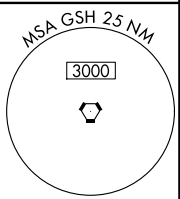
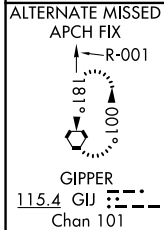
LOC I-GSH 108.3	APP CRS 273°	Rwy Idg 6050
		TDZE 827
		Apr Elev 827

ILS or LOC RWY 27

GOSHEN MUNI (GSH)

DME or RADAR required.		<p>When local altimeter setting not received, use Warsaw Muni altimeter setting and increase all DAs/MDAs 40 feet and increase CEDOB Fix Minimums S-LOC 27 Cats C/D visibility 1/2 mile. Circling NA to Rwys 5 and 25.</p>	
<p>MISSED APPROACH: Climb to 2500 direct GSH VORTAC and hold.</p>			

ASOS 121.45	SOUTH BEND APP CON * 132.05 257.8	CLNC DEL 125.25	UNICOM 123.05 (CTAF) 0
-----------------------	---	---------------------------	----------------------------------



CATEGORY	A	B	C	D
S-ILS 27	1027-3/4 200 (200-3/4)			
S-LOC 27	1360-1	533 (600-1)	1360-1 1/2 533 (600-1 1/2)	1360-1 3/4 533 (600-1 3/4)
CIRCLING	1360-1	533 (600-1)	1360-1 1/2 533 (600-1 1/2)	1380-2 553 (600-2)
CEDOB FIX MINIMUMS				
S-LOC 27	1300-1	473 (500-1)	1300-1 1/4 473 (500-1 1/4)	1300-1 1/2 473 (500-1 1/2)
CIRCLING	1300-1	473 (500-1)	1300-1 1/2 473 (500-1 1/2)	1380-2 553 (600-2)

FAF to MAP 5 NM

Knots	60	90	120	150	180
Min:Sec	5:00	3:20	2:30	2:00	1:40

GOSHEN, INDIANA
Amdt 1A 28FEB19

41°32'N-85°48'W

GOSHEN MUNI (GSH)

ILS or LOC RWY 27

EC-2, 25 FEB 2021 to 25 MAR 2021

EC-2, 25 FEB 2021 to 25 MAR 2021