

WAAS CH 97606 W27A	APP CRS 273°	Rwy Idg 6050 TDZE 827 Apt Elev 827
-------------------------------------	---------------------	---

RNAV (GPS) RWY 27

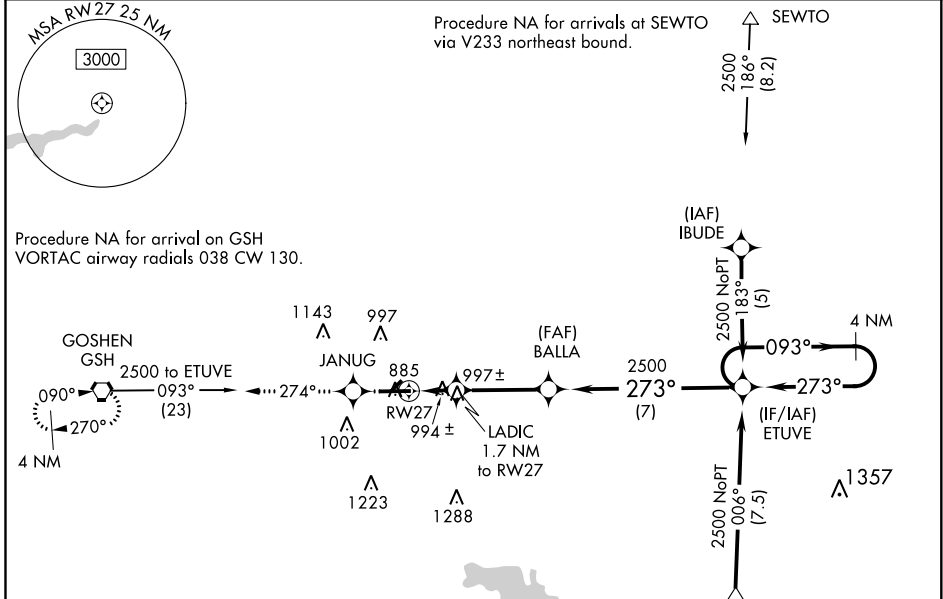
GOSHEN MUNI (GSH)

RNP APCH.

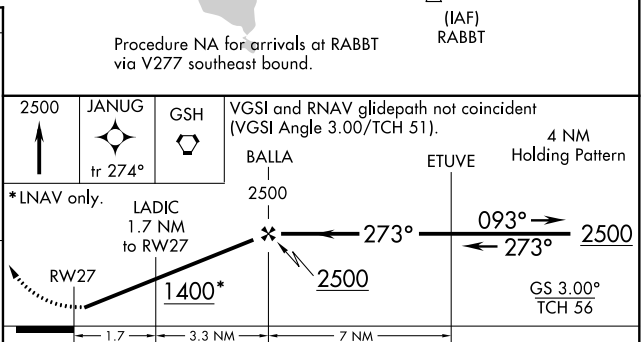
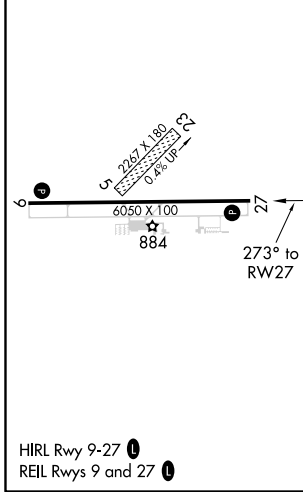
⚠ Baro-VNAV NA when using Warsaw Muni altimeter setting. For uncompensated Baro-VNAV systems, LNAV/VNAV NA below -16°C or above 47°C. When local altimeter setting not received, use Warsaw Muni altimeter setting and increase all DAs/MDAs 40 feet, and increase LPV all Cats visibility ¼ mile. Circling NA to Rwy 5 and 23. Rwy 27 helicopter visibility reduction below ¾ SM NA.

MISSED APPROACH: Climb to 2500 direct JANUG and on 274° track to GSH VORTAC and hold.

ASOS 121.45	SOUTH BEND APP CON * 132.05 257.8	CLNC DEL 125.25	UNICOM 123.05 (CTAF) 0
--------------------	--	------------------------	-------------------------------



ELEV 827	TDZE 827
----------	----------



CATEGORY	A	B	C	D
LPV DA	1120-1 293 (300-1)			
LNAV/ VNAV DA	1307-1¼ 480 (500-1¼)			
LNAV MDA	1260-1	433 (500-1)	1260-1¼ 433 (500-1¼)	1260-1½ 433 (500-1½)
CIRCLING	1300-1	473 (500-1)	1300-1½ 473 (500-1½)	1380-2 553 (600-2)

EC-2, 25 FEB 2021 to 25 MAR 2021

EC-2, 25 FEB 2021 to 25 MAR 2021