

LOC/DME I-LLG <b>109.55</b> Chan 32 (Y)	APP CRS <b>054°</b>	Rwy Idg TDZE <b>9000 916</b>	Apt Elev <b>926</b>
---	------------------------	---------------------------------	------------------------

# ILS or LOC RWY 5L

PIEDMONT TRIAD INTL (GSO)

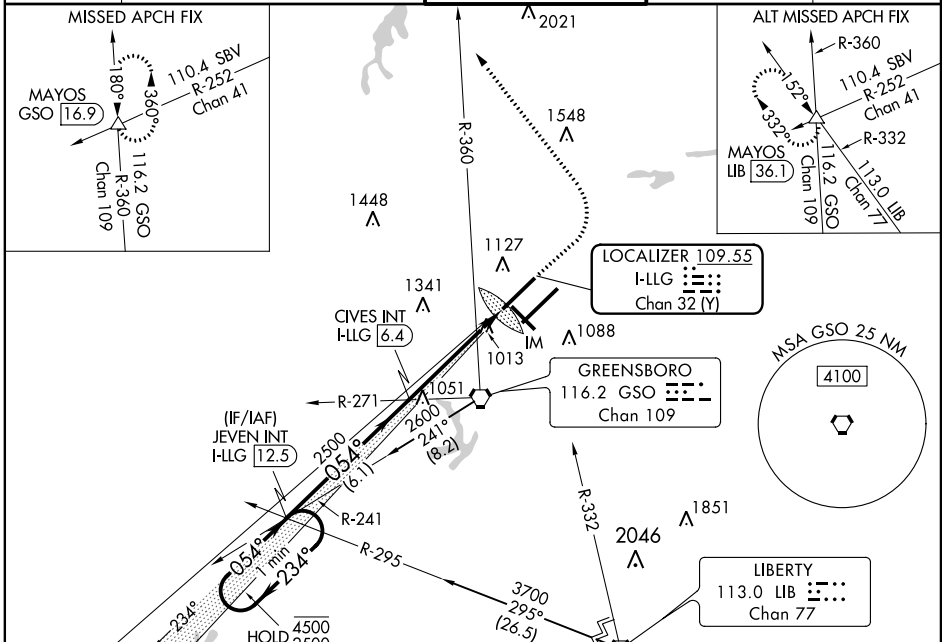
DME or RADAR required for procedure entry at LIB VORTAC.

ALSF-2

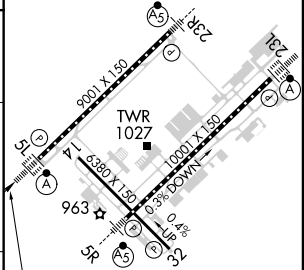
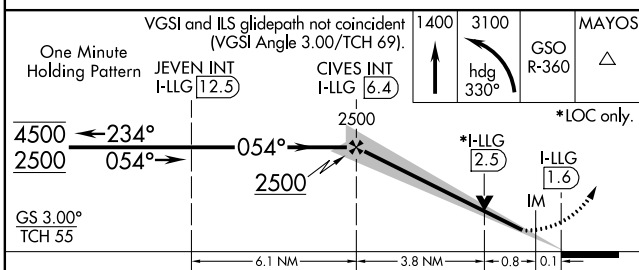
MISSED APPROACH: Climb to 1400 then climbing left turn to 3100 on heading 330° and GSO VORTAC R-360 to MAYOS INT/GSO 16.9 DME and hold.

Simultaneous approach authorized with Rwy 5R. For inop ALS, increase S-LOC 5L Cat C/D visibility to RVR 5500.

D-ATIS <b>128.55</b>	GREENSBORO APP CON <b>124.35 269.225 126.6 327.075</b> (250°-049°) (050°-249°)	GREENSBORO TOWER <b>119.1 290.325</b>	GND CON <b>121.9 348.6</b>	CLNC DEL <b>121.75</b>
-------------------------	---	--	-------------------------------	---------------------------



ELEV 926	TDZE 916
TDZ/CL Rwsy 5L, 23R and 23L	
REIL Rwy 32	
HIRL Rwsy 14-32, 5R-23L and 5L-23R	



CATEGORY	A	B	C	D
S-ILS 5L	1116/18		200 (200-½)	
S-LOC 5L	1280/24	364 (400-½)	1280/35 364 (400-¾)	1280/40 364 (400-¾)
CIRCLING	1440-1 514 (600-1)		1700-2¼ 774 (800-2¼)	1700-2½ 774 (800-2½)

FAF to MAP 4.7 NM					
Knots	60	90	120	150	180
Min:Sec	4:42	3:08	2:21	1:53	1:34

SE-2, 25 FEB 2021 to 25 MAR 2021

SE-2, 25 FEB 2021 to 25 MAR 2021