

LOC/DME I-GFN 111.15 Chan 48(Y)	APP CRS 325°	Rwy Idg TDZE Apt Elev	6380 902 926
--	------------------------	-----------------------------	---

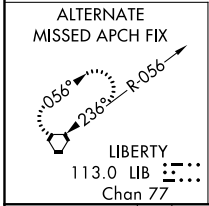
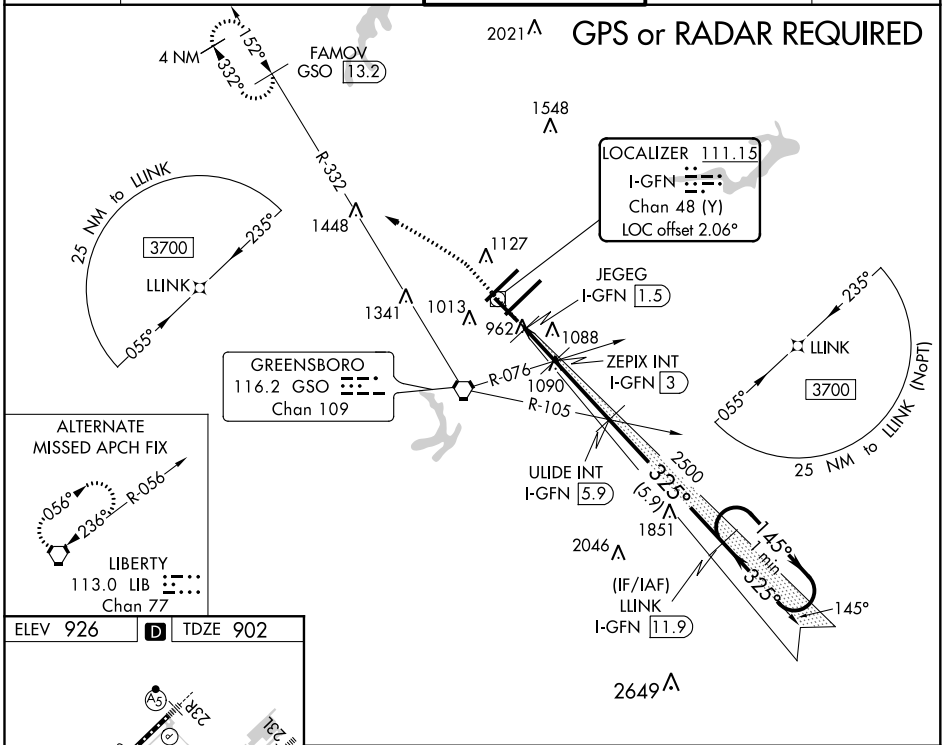
ILS Y or LOC/DME Y RWY 32

PIEDMONT TRIAD INTL (GSO)

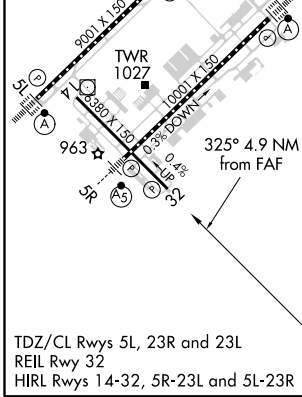
⚠ DME required. When local altimeter setting is not received use Smith Reynolds altimeter setting and increase DA to 1188 feet, all MDA 40 feet, increase S-ILS 32 all Cats visibility 1/8 mile and S-LOC 32 Cats C/D 1/8 mile, and Circling Cats C/D 1/4 mile.

MISSED APPROACH: Climb to 1400 then climbing left turn to 3700 on heading 307° and GSO VORTAC R-332 to FAMOV/GSO 13.2 DME and hold.

D-ATIS 128.55	GREENSBORO APP CON 124.35 269.225 126.6 327.075 (050°-249°)	GREENSBORO TOWER 119.1 290.325	GND CON 121.9 348.6	CLNC DEL 121.75
-------------------------	---	--	-------------------------------	---------------------------



ELEV 926	D	TDZE 902
----------	----------	----------



1400	3700	GSO R-332	FAMOV GSO 13.2	ULIDE INT I-GFN 5.9	LLINK I-GFN 11.9	One Minute Holding Pattern
*LOC only.		ZEPIX INT I-GFN 3		2500	145° → 3700 ← 325°	
JEGEG I-GFN 1.5		*1600		2500	GS 3.00° TCH 53	
0.4		1.6 NM		2.9 NM		5.9 NM
CATEGORY	A		B		C	
S-ILS 32			1152-3/4		250 (300-3/4)	
S-LOC 32	1220-1 318 (400-1)				1220-7/8 318 (400-7/8)	
C CIRCLING	1440-1 514 (600-1)				1700-2 1/4 774 (800-2 1/4) 1700-2 1/2 774 (800-2 1/2)	

SE-2, 25 FEB 2021 to 25 MAR 2021

SE-2, 25 FEB 2021 to 25 MAR 2021