

WAAS CH <b>93919</b> <b>W14A</b>	APP CRS <b>143°</b>	Rwy Idg TDZE Apt Elev	<b>6380</b> <b>925</b> <b>926</b>
--	------------------------	-----------------------------	---

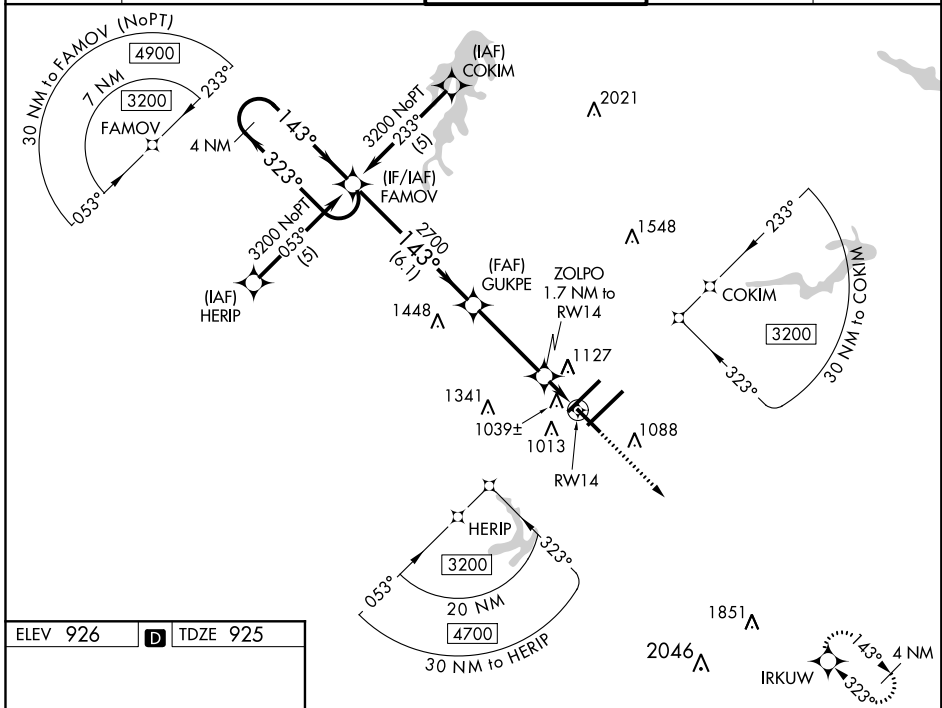
# RNAV (GPS) RWY 14

PIEDMONT TRIAD INTL (GSO)

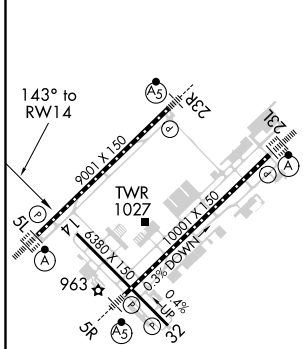
**⚠** Baro-VNAV NA when using Winston-Salem altimeter setting. For uncompensated Baro-VNAV systems, LNAV/VNAV NA below -16°C (4°F) or above 47°C (116°F). DME/DME RNP-0.3 NA. When local altimeter setting not received, use Winston-Salem altimeter setting: increase LPV DA to 1163 feet; increase LNAV/VNAV DA to 1461 feet; increase all MDAs 40 feet and visibility Cats C and D ¼ SM. VDP NA with Winston-Salem altimeter setting.

**MISSED APPROACH:**  
Climb to 3700 direct IRKUW and hold.

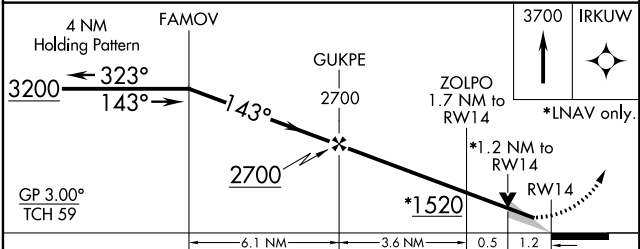
D-ATIS <b>128.55</b>	GREENSBORO APP CON <b>124.35 269.225</b> (250°-049°) <b>126.6 327.075</b> (050°-249°)	GREENSBORO TOWER <b>119.1 290.325</b>	GND CON <b>121.9 348.6</b>	CLNC DEL <b>121.75</b>
-------------------------	---	--	-------------------------------	---------------------------



ELEV 926	<b>D</b>	TDZE 925
----------	----------	----------



TDZ/CL Rwy 5L, 23R and 23L  
REIL Rwy 32  
HIRL Rwy 14-32, 5R-23L and 5L-23R



CATEGORY	A	B	C	D
LPV DA		1125-3/4	200 (200-3/4)	
LNAV/VNAV DA		1423-13/4	498 (500-13/4)	
LNAV MDA	1360-1	435 (500-1)	1360-1 1/4 435 (500-1 1/4)	1360-1 1/2 435 (500-1 1/2)
<b>C</b> CIRCLING	1440-1	514 (600-1)	1700-2 1/4 774 (800-2 1/4)	1700-2 1/2 774 (800-2 1/2)

SE-2, 25 FEB 2021 to 25 MAR 2021

SE-2, 25 FEB 2021 to 25 MAR 2021