

WAAS CH <b>61035</b> <b>W32A</b>	APP CRS <b>323°</b>	Rwy Idg <b>6380</b> TDZE <b>902</b> Apt Elev <b>926</b>
--	------------------------	---

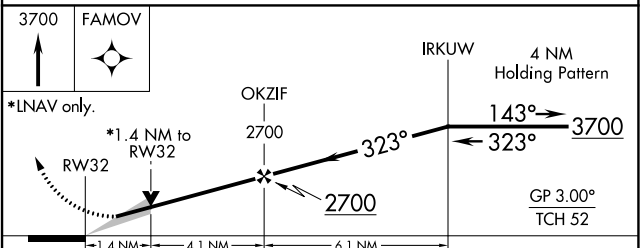
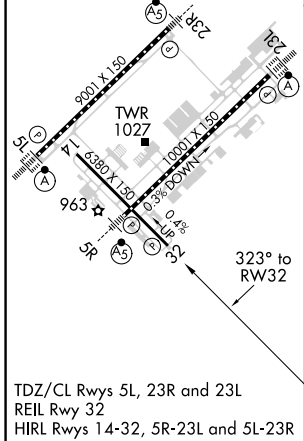
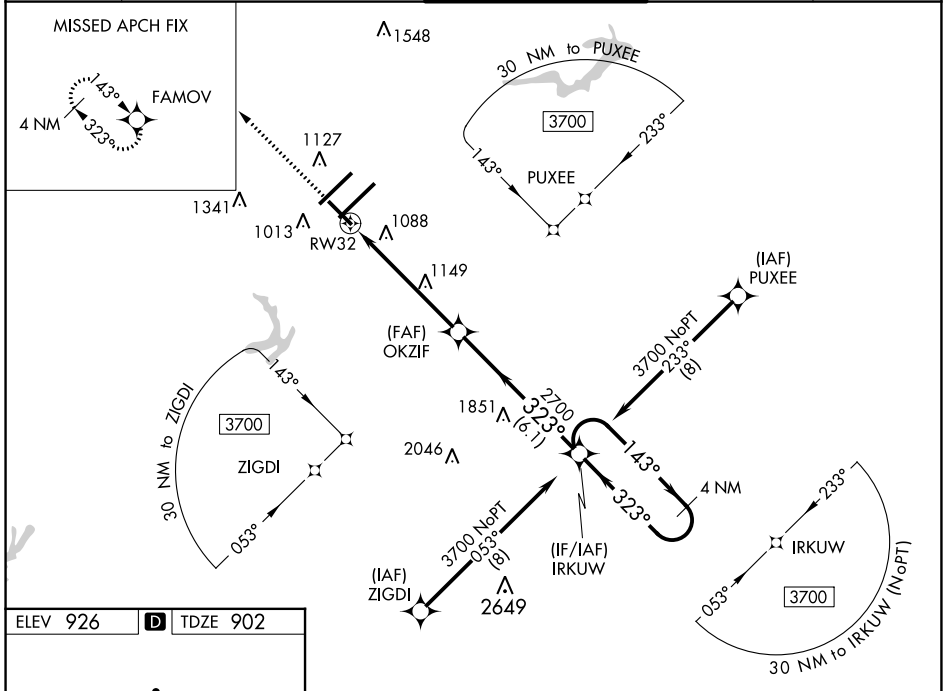
# RNAV (GPS) RWY 32

PIEDMONT TRIAD INTL (GSO)

**⚠** For uncompensated Baro-VNAV systems, LNAV/VNAV NA below -10°C (14°F) or above 54°C (130°F). DME/DME RNP-0.3 NA. Baro-VNAV and VDP NA when using Smith Reynolds altimeter setting. When local altimeter setting is not received use Smith Reynolds altimeter setting: increase all DA 38 feet and all MDA 40 feet, increase LNAV/VNAV all Cats and LNAV Cats C/D visibilities 1/8 mile, increase Circling Cats C/D visibility 1/4 mile.

MISSED APPROACH:  
Climb to 3700 direct  
FAMOV and hold.

D-ATIS <b>128.55</b>	GREENSBORO APP CON <b>124.35 269.225</b> (250°-049°) (050°-249°)	GREENSBORO TOWER <b>119.1 290.325</b>	GND CON <b>121.9 348.6</b>	CLNC DEL <b>121.75</b>
-------------------------	---	--	-------------------------------	---------------------------



CATEGORY	A	B	C	D
LPV DA		1102-3/4	200 (200-3/4)	
LNAV/VNAV DA		1419-13/4	517 (500-13/4)	
LNAV MDA	1400-1	498 (500-1)	1400-13/8	498 (500-13/8)
<b>C</b> CIRCLING	1440-1	514 (600-1)	1700-21/4 774 (800-21/4)	1700-21/2 774 (800-21/2)

SE-2, 25 FEB 2021 to 25 MAR 2021

SE-2, 25 FEB 2021 to 25 MAR 2021