

FORT DRUM, NEW YORK

# ILS or LOC RWY 21

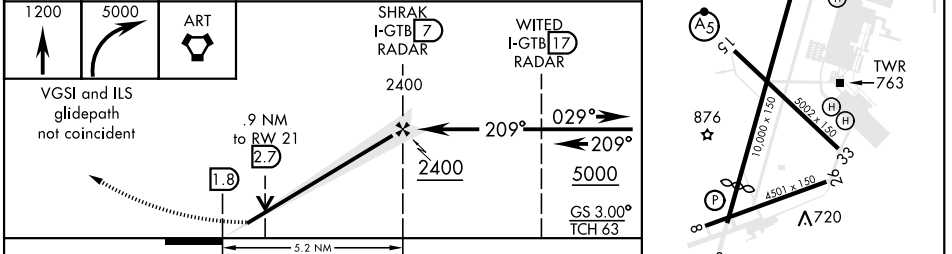
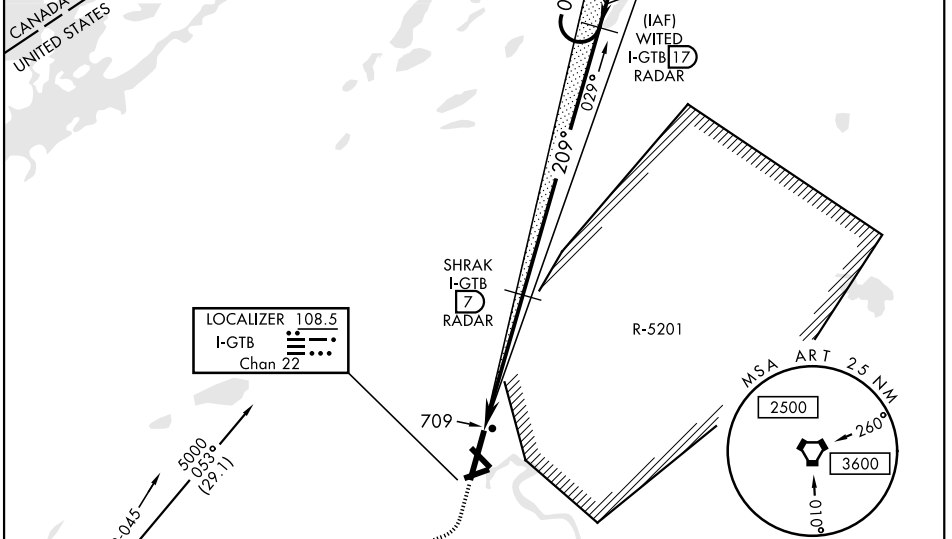
LOC/DME I-GTB <b>108.5</b> Chan <b>22</b>	APCH CRS <b>209°</b>	Rwy ldg <b>10,000</b> TDZE <b>677</b> Arpt Elev <b>690</b>	AL-5754 [USA]	WHEELER-SACK AAF (KGTB)
---	-------------------------	--	---------------	-------------------------

DME or RADAR required.	ALSF-1 	MISSED APPROACH: Climb to 1200, then climbing right turn to 5000 direct ART VORTAC and hold. Continue climb-in-hold to 5000.
------------------------	------------	--

ATIS <b>119.525</b>	WHEELER-SACK APP CON <b>124.875 257.6</b>	TOWER <b>118.75 290.25</b>	GND CON <b>121.9 229.8</b>	CLNC DEL <b>121.9</b>	ASR/PAR
------------------------	--	-------------------------------	-------------------------------	--------------------------	---------

\*\*\* Circling NA E of Rwy 21 and 33.  
 Circling NA for CAT BCD to Rwy 8.  
 Circling NA for CAT E to Rwy 8-26 and 15-33.

ALTERNATE MISSED APPROACH: When directed by ATC, climb to 1200, then climbing right turn to 3000 via hdg 250° within 10 NM (RADAR required).



ELEV 690	TDZE 677
Rwy 3 ldg 8637'	209° 5.2 NM from FAF
FAF to MAP 5.2 NM	
Knots	120 140 160 180 200
Min:Sec	2:36 2:14 1:57 1:44 1:34

FORT DRUM, NEW YORK 44° 03'N-75° 43'W WHEELER-SACK AAF (KGTB)

# ILS or LOC RWY 21

NE-2, 25 FEB 2021 to 25 MAR 2021

NE-2, 25 FEB 2021 to 25 MAR 2021