

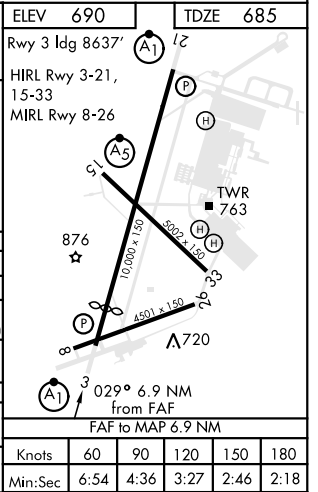
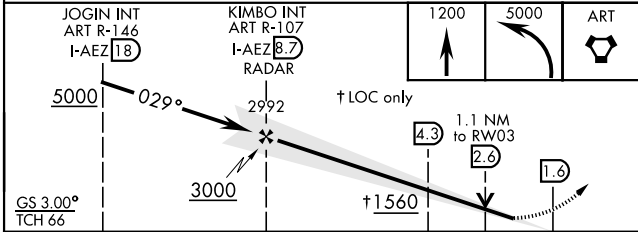
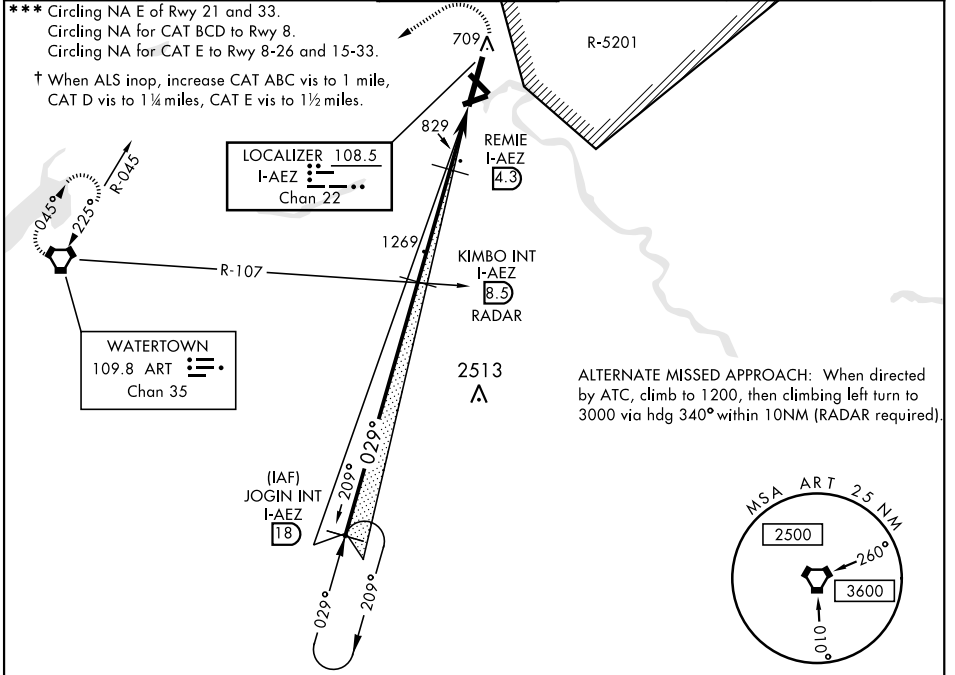
FORT DRUM, NEW YORK

ILS or LOC RWY 3

LOC/DME I-AEZ 108.5 Chan 22	APCH CRS 029°	Rwy Idg TDZE 685 Arpt Elev 690	AL-5754 [USA]	WHEELER-SACK AAF (KGTB)
---	-------------------------	--	---------------	-------------------------

DME or RADAR required.	ALS-F1 	MISSED APPROACH: Climb to 1200, then climbing left turn to 5000 direct ART VORTAC and hold. Continue climb-in-hold to 5000.
------------------------	------------	---

ATIS 119.525	WHEELER-SACK APP CON 124.875 257.6	WHEELER-SACK TOWER 118.75 290.25	GND CON 121.9 229.8	CLNC DEL 121.9	ASR/PAR
------------------------	--	--	-------------------------------	--------------------------	---------



CATEGORY	A	B	C	D	E
S-ILS 3 *	957-1/2		272	(300-1/2)	
S-LOC 3 **	1560-1/2 875 (900-1/2)	1560-3/4 875 (900-3/4)	1560-2 875 (900-2)	1560-2 1/4 875 (900-2 1/4)	1560-2 1/2 875 (900-2 1/2)
***	1560-1 870 (900-1)	1560-1 1/4 870 (900-1 1/4)	1560-2 1/2 870 (900-2 1/2)	1560-2 3/4 870 (900-2 3/4)	1560-3 870 (900-3)
DME MINIMUMS					
S-LOC 3 †	1080-1/2 395 (400-1/2)		1080-3/4 395 (400-3/4)	1080-1 395 (400-1)	
***	1180-1 490 (500-1)		1180-1 1/2 490 (500-1 1/2)	1240-2 550 (600-2)	830 (900-3)

FORT DRUM, NEW YORK 44° 03'N-75° 43'W WHEELER-SACK AAF (KGTB)

Amdt 2B 25FEB21

ILS or LOC RWY 3

NE-2, 25 FEB 2021 to 25 MAR 2021

NE-2, 25 FEB 2021 to 25 MAR 2021

Knots	60	90	120	150	180
Min:Sec	6:54	4:36	3:27	2:46	2:18