

# RNAV (RNP) Z RWY 21

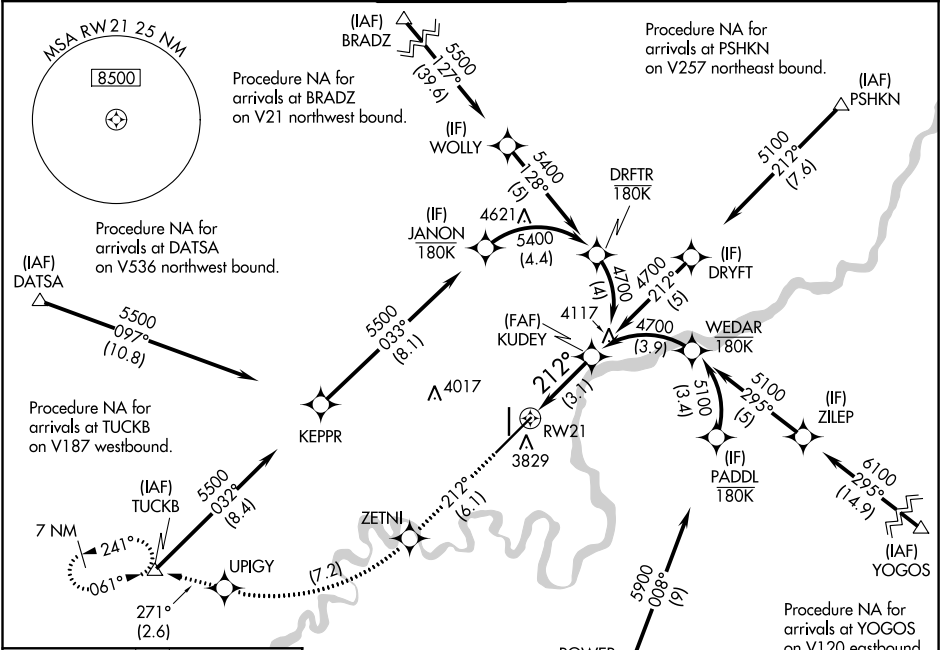
GREAT FALLS INTL (GTF)

APP CRS	Rwy Idg	<b>10502</b>
<b>212°</b>	TDZE	<b>3669</b>
	Apt Elev	<b>3680</b>

**RF** required. GPS required. For uncompensated Baro-VNAV systems, procedure NA below -24°C (-11°F) or above 49°C (121°F).

**MISSED APPROACH:** Climb to 8000 on track 212° to ZETNI, right turn to UPIGY and on track 271° to TUCKB and hold, continue climb-in-hold to 8000.

ATIS <b>126.6 269.0</b>	GREAT FALLS APP CON <b>128.6 379.175</b>	GREAT FALLS TOWER <b>118.7 282.2</b>	GND CON <b>121.7 348.6</b>	CLNC DEL <b>121.7 348.6</b>
----------------------------	---	---	-------------------------------	--------------------------------



NW-1, 25 FEB 2021 to 25 MAR 2021

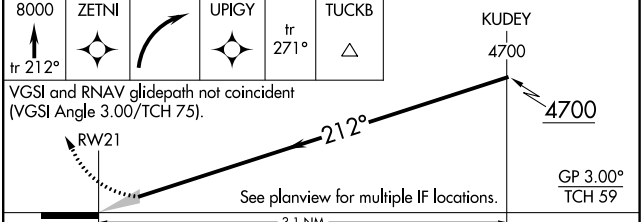
NW-1, 25 FEB 2021 to 25 MAR 2021

ELEV 3680	<b>D</b>	TDZE 3669
-----------	----------	-----------

TDZ/CL Rwy 3  
REIL Rwy 21  
HIRL Rwy 3-21  
MIRL Rwy 17-35

Procedure NA for arrivals at URELE on V536 southbound.

(IAF) URELE  $\Delta$  4949



CATEGORY	A	B	C	D
RNP 0.10 DA		3942/45	273 (300-7%)	
RNP 0.30 DA		3992/50	323 (400-1)	

## AUTHORIZATION REQUIRED