

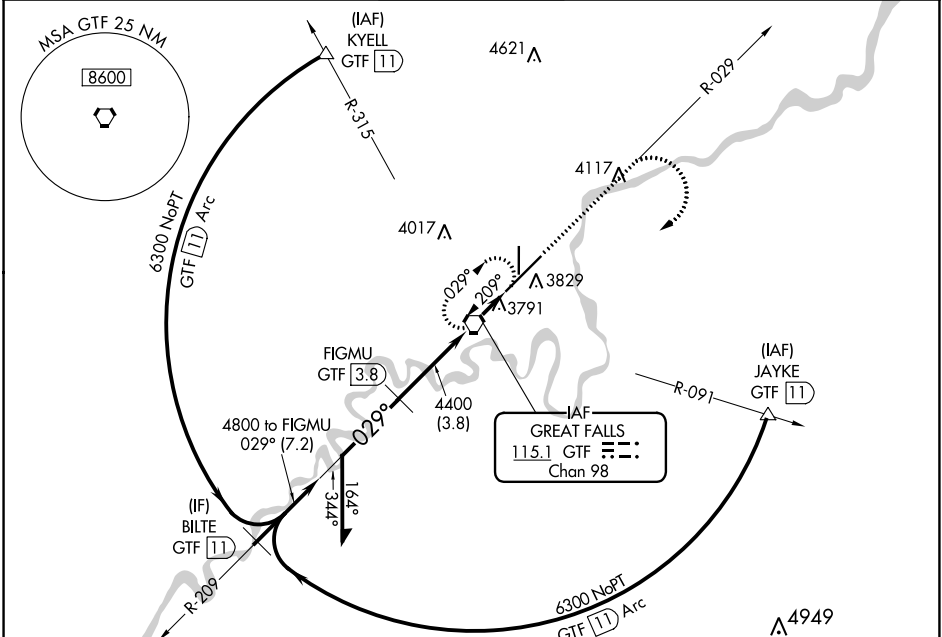
VORTAC GTF 115.1 Chan 98	APP CRS 029°	Rwy Idg 10502 TDZE 3680 Apt Elev 3680
----------------------------------------------	------------------------	------------------------------------------------------------------

VOR/DME RWY 3

GREAT FALLS INTL (GTF)

-33°C For inoperative ALSF-2, increase S-3 Cat D visibility to RVR 6000.	ALSF-2 	MISSED APPROACH: Climb to 5000 via GTF VORTAC R-029 then climbing right turn to 6300 direct GTF VORTAC and hold, continue climb-in-hold to 6300.

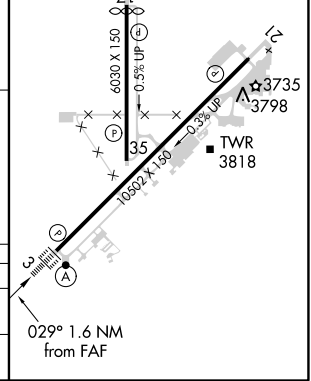
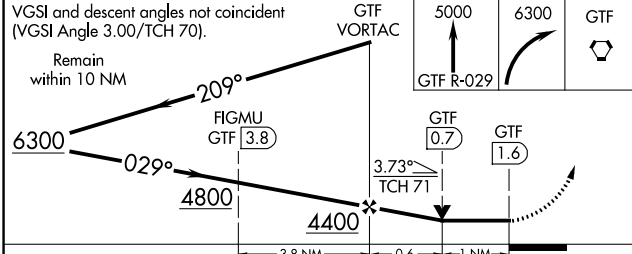
ATIS 126.6 269.0	GREAT FALLS APP CON 128.6 379.175	GREAT FALLS TOWER 118.7 282.2	GND CON 121.7 348.6	CLNC DEL 121.7 348.6
----------------------------	---------------------------------------------	-----------------------------------------	-------------------------------	--------------------------------



NW-1, 25 FEB 2021 to 25 MAR 2021

NW-1, 25 FEB 2021 to 25 MAR 2021

ELEV 3680	TDZE 3680
TDZ/CL Rwy 3 REIL Rwy 21 MIRL Rwy 17-35 HIRL Rwy 3-21	



CATEGORY	A	B	C	D
S-3	4060/24 380 (400-½)			NA
CIRCLING	4180-1	500 (500-1)	4320-1¾ 640 (700-1¾)	4420-2¼ 740 (800-2¼)