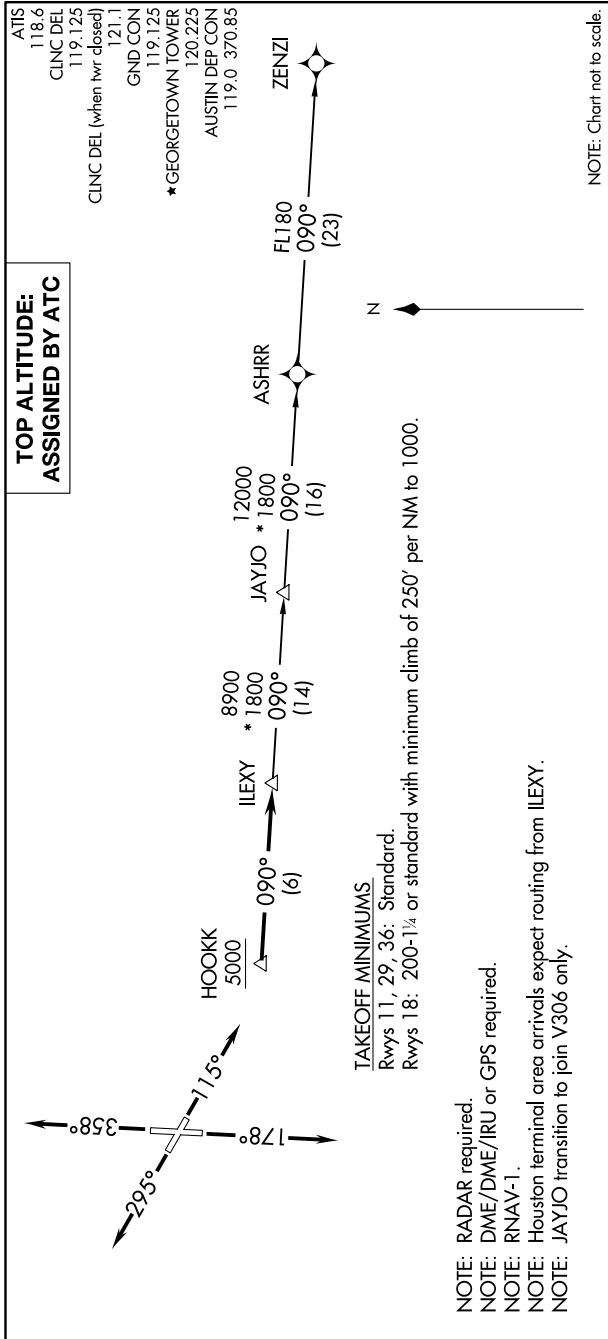


SC-3, 25 FEB 2021 to 25 MAR 2021



DEPARTURE ROUTE DESCRIPTION

TAKEOFF RUNWAY 11: Climb heading 115° or as assigned by ATC for RADAR vectors to cross HOOKK at or above 5000, thence....
 TAKEOFF RUNWAY 18: Climb heading 178° or as assigned by ATC for RADAR vectors to cross HOOKK at or above 5000, thence....
 TAKEOFF RUNWAY 29: Climb heading 295° or as assigned by ATC for RADAR vectors to cross HOOKK at or above 5000, thence....
 TAKEOFF RUNWAY 36: Climb heading 358° or as assigned by ATC for RADAR vectors to cross HOOKK at or above 5000, thence....
 ... on track 090° to ILEXY, then on transition. Maintain altitude assigned by ATC. Expect filed altitude 10 minutes after departure.

JAYJO TRANSITION (ILEXY2.JAYJO):
 ZENZI TRANSITION (ILEXY2.ZENZI):

SC-3, 25 FEB 2021 to 25 MAR 2021