

WAAS CH <b>82625</b> <b>W18A</b>	APP CRS <b>177°</b>	Rwy Idg <b>5904</b> TDZE <b>3125</b> Apt Elev <b>3125</b>
--	------------------------	---

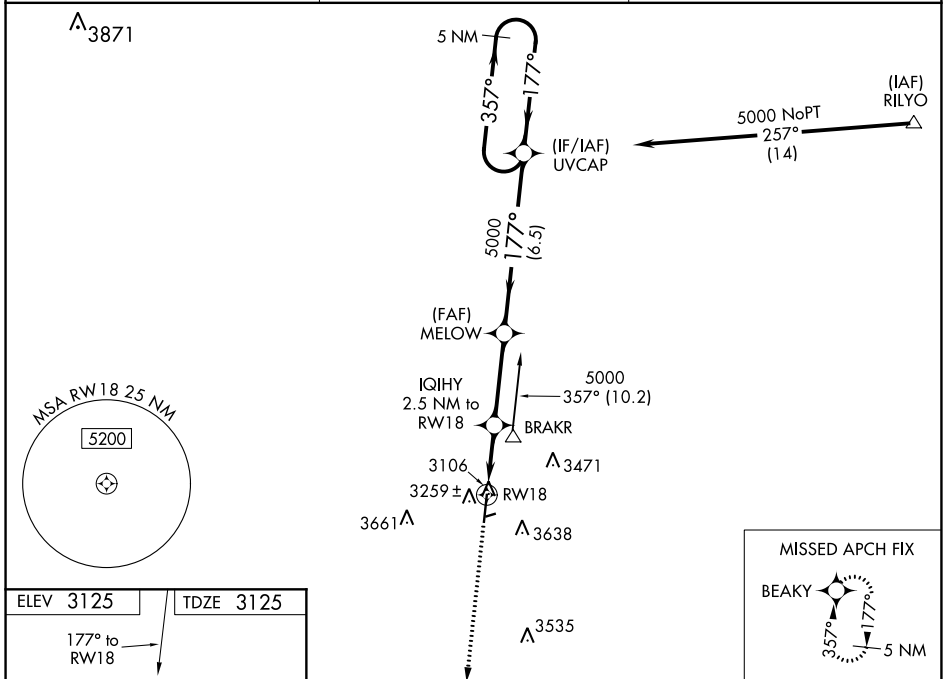
# RNAV (GPS) RWY 18

GUYMON MUNI (GUY)

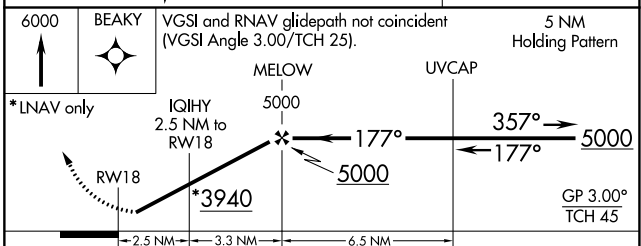
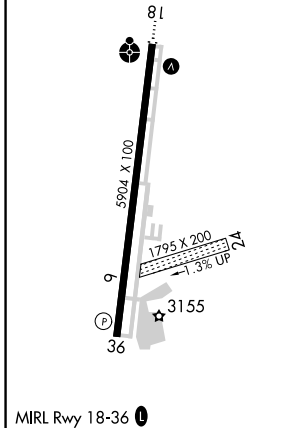
**⚠** Baro-VNAV NA when using Liberal altimeter setting. For uncompensated Baro-VNAV systems, LNAV/VNAV NA below -21°C (-5°F) or above 54°C (130°F). When VGSI inop, Straight-in/ Circling Rwy 18 procedure NA at night. Circling NA East of Rwy 18-36. DME/DME RNP-0.3 NA. Visibility reduction by helicopters NA. When local altimeter not received, use Liberal altimeter setting and increase all DA 113 feet and all MDA 120 feet, increase LPV all Cats visibility ¼ mile, increase LNAV/VNAV all Cats and LNAV Cat C visibility ⅓ mile. Circling NA to Rwy 6 and 24.

**ODALS** MISSED APPROACH: Climb to 6000 direct BEAKY and hold.

ASOS <b>119.925</b>	KANSAS CITY CENTER <b>134.0 257.865</b>	UNICOM <b>122.7 (CTAF)</b> <b>①</b>
------------------------	--	--



ELEV 3125	TDZE 3125
-----------	-----------



CATEGORY	A	B	C	D
LPV DA		3375-1	250 (300-1)	NA
LNAV/VNAV DA		3451-1	326 (400-1)	NA
LNAV MDA		3520-1	395 (400-1)	NA
CIRCLING	3580-1	455 (500-1)	3580-1½ 455 (500-1½)	NA

SC-1, 25 FEB 2021 to 25 MAR 2021

SC-1, 25 FEB 2021 to 25 MAR 2021