

WAAS CH <b>77605</b> <b>W23A</b>	APP CRS <b>224°</b>	Rwy Idg TDZE Apt Elev	<b>5100</b> <b>1274</b> <b>1277</b>
--	------------------------	-----------------------------	---

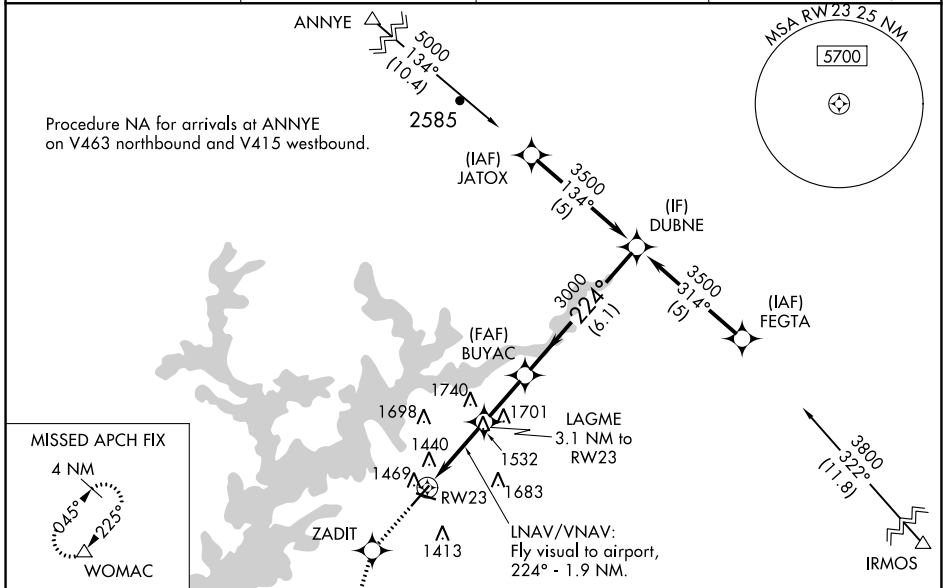
# RNAV (GPS) RWY 23

LEE GILMER MEMORIAL (GVL)

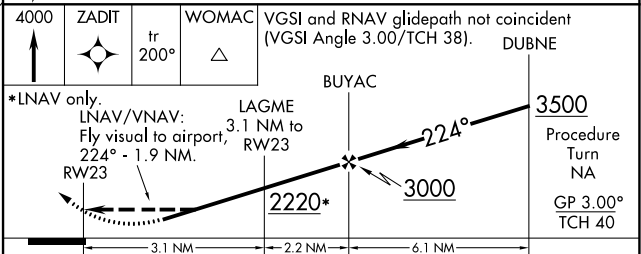
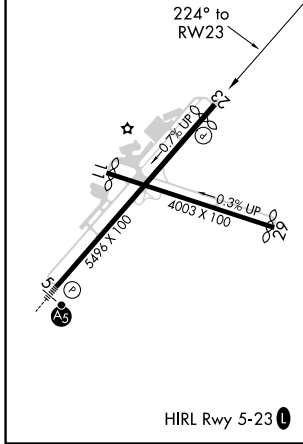
RNP APCH.  
 LNAV/VNAV NA when using Jefferson altimeter setting. Rwy 23 helicopter visibility reduction below 3/4 SM NA. For uncompensated Baro-VNAV systems, LNAV/VNAV NA below -17°C or above 46°C. When local altimeter setting not received, use **Δ** Jefferson altimeter setting: increase all DA/MDA 80 feet; increase LPV all Cts visibility 1/4 SM, and increase LNAV Cts C/D visibility and Circling Cats C/D visibility 1/4 SM. Circling Rwy 11, 29 NA at night.

MISSED APPROACH: Climb to 4000 direct ZADIT and on 200° track to WOMAC and hold, continue climb-in-hold to 4000.

ASOS <b>126.475</b>	ATLANTA APP CON * <b>132.475 291.1</b>	GCO <b>121.725</b>	UNICOM <b>123.075 (CTAF) 0</b>
------------------------	---	-----------------------	-----------------------------------



ELEV 1277	TDZE 1274
-----------	-----------



CATEGORY	A	B	C	D
LPV DA	1722-1 3/4 448 (500-1 3/4)			
LNAV/VNAV DA	1884-2 610 (700-2)			
LNAV MDA	1840-1 566 (600-1)	1840-1 1/2 566 (600-1 1/2)	1840-1 3/4 566 (600-1 3/4)	1840-1 3/4 566 (600-1 3/4)
CIRCLING	1880-1 603 (700-1)	1880-1 3/4 603 (700-1 3/4)	2060-2 1/2 783 (800-2 1/2)	2060-2 1/2 783 (800-2 1/2)

SE-4, 25 FEB 2021 to 25 MAR 2021

SE-4, 25 FEB 2021 to 25 MAR 2021