

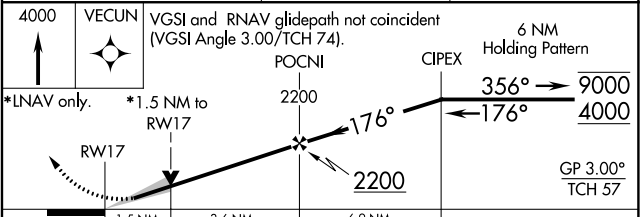
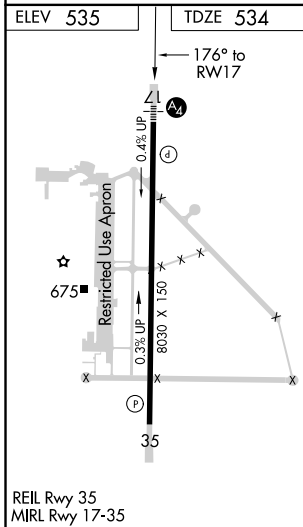
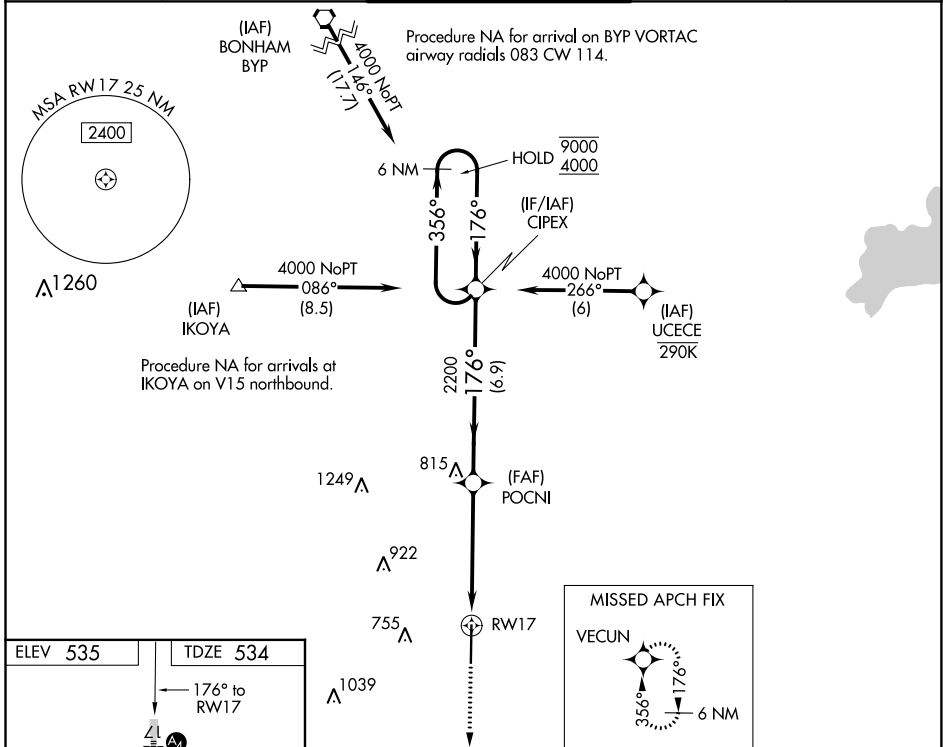
WAAS CH <b>86205</b> <b>W17A</b>	APP CRS <b>176°</b>	Rwy Idg TDZE Apt Elev	<b>8030</b> <b>534</b> <b>535</b>
--	------------------------	-----------------------------	---

# RNAV (GPS) RWY 17

MAJORS (GVT)

RNP APCH.	MALS	MISSED APPROACH: Climb to 4000 direct VECUN and hold, continue climb-in hold to 4000.
<p>⚠ Inop table does not apply to LPV and LNAV/VNAV all Cats and LNAV Cats A and B. For uncompensated Baro-VNAV systems, LNAV/VNAV NA below -16°C or above 54°C. For inop ALS, increase LNAV Cat E visibility to 1½ SM.</p>		

AWOS-3 <b>133.425</b>	FORT WORTH CENTER <b>132.025 360.75</b>	MAJORS TOWER ★ <b>118.65 (CTAF) 0 385.425</b>	GND CON <b>121.7 335.8</b>	UNICOM <b>122.95</b>
--------------------------	--	--	-------------------------------	-------------------------



CATEGORY	A	B	C	D	E
LPV DA		734-1	200 (200-1)		
LNAV/VNAV DA		832-1	298 (300-1)		
LNAV MDA	1060-1	526 (600-1)	1060-1¼	526 (600-1¼)	
<b>C</b> CIRCLING	1060-1	525 (600-1)	1060-1½ 525 (600-1½)	1240-2¼ 705 (800-2¼)	1300-2¾ 765 (800-2¾)

SC-2, 25 FEB 2021 to 25 MAR 2021

SC-2, 25 FEB 2021 to 25 MAR 2021