

TACAN MJF Chan 33 <b>(109.6)</b>	APP CRS <b>167°</b>	Rwy Idg TDZE Apt Elev	<b>8030</b> <b>534</b> <b>535</b>
--	------------------------	-----------------------------	---

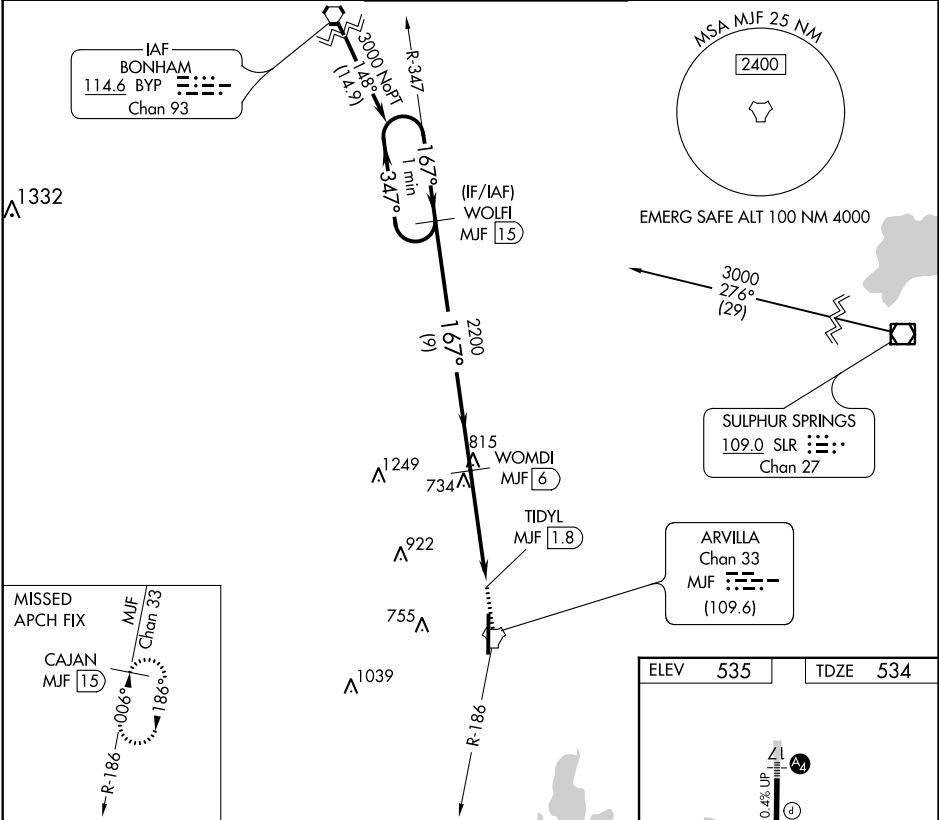
# TACAN RWY 17

MAJORS (GVT)

**▽** Visibility reduction by helicopters NA. When local altimeter setting not received, use Terrell altimeter setting; increase all MDA 80 feet, increase S-17 Cats C/D/E and Circling Cats C/E visibility ¼ mile. For inoperative MALSR, increase S-17 Cat E visibility ¼ mile.

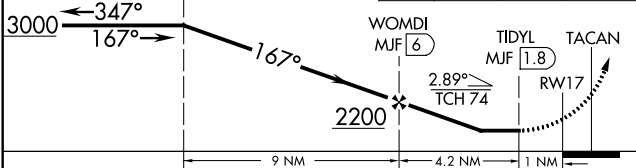
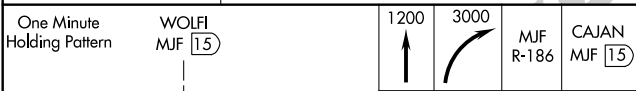
**MALS**  
**Ⓜ** **≡**  
**MISSED APPROACH:** Climb to 1200 then climbing right turn to 3000 on MJF TACAN R-186 to CAJAN/MJF 15 DME and hold.

AWOS-3 <b>133.425</b>	FORT WORTH CENTER <b>132.025 360.75</b>	MAJORS TOWER ★ <b>118.65 (CTAF) 0 385.425</b>	GND CON <b>121.7 335.8</b>	UNICOM <b>122.95</b>
--------------------------	--	--	-------------------------------	-------------------------

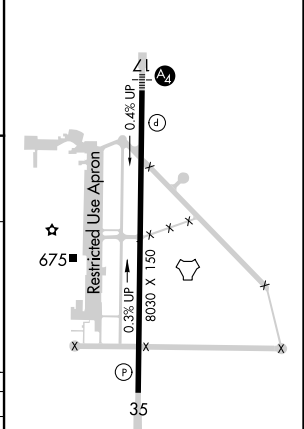


SC-2, 25 FEB 2021 to 25 MAR 2021

SC-2, 25 FEB 2021 to 25 MAR 2021



ELEV	535	TDZE	534
------	-----	------	-----



CATEGORY	A	B	C	D	E
S-17	1060-1	526 (600-1)	1060-1¼ 526 (600-1¼)		
CIRCLING	1060-1¼	525 (600-1¼)	1060-1½ 525 (600-1½)	1100-2 565 (600-2)	1280-2¾ 745 (800-2¾)

REIL Rwy 35  
MIRL Rwy 17-35